



University profiles 2024



UNIVERSITIES
AUSTRALIA



Universities Australia is the voice of Australia's universities

As the peak body for the sector, we highlight the vast social, economic and cultural value of higher education and research to Australia and the world.

On behalf of our 39 member universities, we provide expert policy advice and media commentary on higher education.

We make submissions, develop policy across the sector, represent Australia's universities on government and industry appointed bodies, and partner with university sectors in other countries to drive bilateral and global collaborations.

We build capacity across the Australian university sector through our flagship annual conference and high-level policy workshops throughout the year. And we lift the profile of the extraordinary contributions made by university graduates and research to our society and economy.

Through Universities Australia and our subsidiary Higher Ed Services, member universities also have access to collective procurement and licensing agreements.

For more information, please visit the Universities Australia website:

universitiesaustralia.edu.au



**Vice-Chancellor
and President**

Professor Peter Høj AC
08 8313 5201
vice-chancellor@
adelaide.edu.au

Chancellor

The Hon Catherine
Branson AC KC

Contact details

North Terrace
Adelaide, SA 5005
08 8313 5208

Website

adelaide.edu.au

Campus locations

- North Terrace
- Roseworthy
- Waite

At the University of Adelaide, we unite and serve those striving to change the world—and themselves—for the better. This is a place where you can make history.

Established in 1874, we're home to over 22,000 equivalent-full-time students and 3,000 staff, all working to create progress. Ours is a university of outstanding quality—ranked 89th in the world*—in the heart of one of Australia's most liveable cities†.

Relentlessly progressive

Adelaide has always broken new ground. We were Australia's first university to welcome female students. The first offering science and business degrees. The first with a conservatorium of music.

Among those who've studied, taught, or conducted research here are Australia's first: female prime minister; space-walking astronaut; Indigenous Rhodes Scholar; and female Supreme Court judge and state governor. Not to mention five Nobel Prize winners.

Exceptional research and education

As a member of Australia's prestigious Group of Eight research-intensive universities, we're rising to global challenges with research universally rated world-standard or above^.

In fact, our output is recognised as 'well above' world standard in 41 distinct areas. These range from space sciences, materials engineering and AI, to cardiorespiratory medicine, crop production and environmental science.

As a teaching university, we're ranked among the top 100 globally in 14 subject areas‡ including dentistry, agriculture and forestry and civil engineering.

We also lead our state in graduate employability**. Our degrees combine deep discipline knowledge with broad, transferable skills, ensuring graduates are well prepared for multidimensional careers in the future workforce.

*QS World University Rankings, 2024. †Economist Intelligence Unit, 2022.

^Excellence in Research Australia, 2018 (the most recent assessment date).

‡Total unique entries across QS World University Rankings by Subject (2023), Times Higher Education (2023), and Academic Ranking of World Universities by Subject (2022).

**QS Graduate Employability Ranking, 2022.



**Vice-Chancellor
and President**

Professor Zlatko Skrbis
02 9739 2930
zlatko.skrbis@acu.edu.au

Chancellor

The Hon Martin Daubney
AM KC

Contact details

40 Edward Street North
Sydney NSW 2060
02 9739 2368

Website

acu.edu.au

Campus locations

- Ballarat
- Blacktown
- Brisbane
- Canberra
- Melbourne
- North Sydney
- Strathfield
- Rome, Italy

An ACU education builds on the Catholic understanding of faith and reason working together in pursuit of knowledge and promotion of human dignity and the common good.

An ACU education seeks to transform lives and communities. Students are challenged to look beyond the classroom, solve real-world problems, develop their own search for meaning and cultivate strong professional ethics. They are invited to stand up for people in need and causes that matter.

ACU is open to all. As is common with great Catholic institutions the world over, the university is inclusive and supportive of everyone, every day – regardless of their faith or tradition.

ACU is a young university making a serious impact. We're ranked in the top two per cent of universities worldwide* and in the top 10 Catholic universities**. The university has seven campuses around Australia, a campus in Rome, Italy, and an online campus – ACU Online.

Opportunities for personal and professional growth are critical to ACU. This is a university of service – so much so that it is built into the curricula. All ACU courses offer work placements, internships, or volunteering opportunities.

* Times Higher Education World University Rankings 2024. Percentage calculated as ACU's world rank as a proportion of the total number of universities in the world: *International Handbook of Universities 2019*, Palgrave MacMillan.

** International Federation of Catholic Universities members ranked on *Times Higher Education World University Rankings 2023*.



Vice-Chancellor and President

Professor Genevieve Bell
AO FAHA FTSE
02 6125 2510
vc@anu.edu.au

Chancellor

The Hon Julie Bishop

Contact details

Canberra ACT 2601
02 6125 5111
enquiries@anu.edu.au

Website

anu.edu.au

Campus locations

- Main Campus (Acton)
- Canberra Hospital, Clinical School
- Kioloa Coastal Campus
- Mt Stromlo Observatory
- North Australia Research Unit
- Siding Spring Observatory

Founded in 1946, in a spirit of post-war optimism, our role was to help realise Australia's potential as the world recovered from a global crisis and that vision has been our mission ever since.

Today, we work not only to ensure our national prosperity, but to help Australia tackle the complex challenges facing humanity, like the climate crisis and global pandemics.

We are an inclusive community open to all people who have the talent and passion to succeed, regardless of their background. We seek to reflect our nation and our region.

Connections are important to us – be they to people or to country. We connect both locally, where our ties to the Australian Government and policymakers enable our researchers to help shape national policy, and on the international stage, where our trusted experts act as a conduit for Australian contribution to the global community.

Our campus is a meeting place for our community to converge and collaborate, as First Nations people have done on these lands for thousands of years.

What we do can be difficult work, but it's work we proudly do – because connecting talented people with diverse perspectives, equipping and encouraging them to address the most complex of tomorrow's problems, and ensuring Australia's future is not just our approach – it's also our role and responsibility as Australia's national university, and it's a responsibility from which we'll never waver.



Vice-Chancellor and President

Professor Tim Brailsford
07 5595 1050
vc@bond.edu.au

Chancellor

The Hon Dr Annabelle Bennett AC SC

Contact details

14 University Drive
Robina QLD 4226
07 5595 1111
information@bond.edu.au

Website

bond.edu.au

Campus Location

- Gold Coast

Dedicated to a deliberately different, personalised approach to education, Bond University is Australia's leading independent, not-for-profit university. Bond is driven by a desire to produce standout graduates with the skills to transform industries and lead the charge across sectors.

Bond students receive a unique educational experience founded on smaller class sizes, abundant opportunities for connection and professional development, and accelerated degrees that put them at the forefront of a rapidly changing career landscape. Throughout their time at Bond, students also have access to world-class academics with real industry experience who are personally invested in their personal and professional growth.

A five-star student experience

Bond is recognised in Australia and globally for the quality of its student experience. In the 2023 – 2026 QS Stars rating, Bond achieved the highest rating of five stars across several categories including teaching, employability, academic development, internationalisation, facilities, medicine and inclusiveness.

Employable, future-focused graduates

Bond is proud to produce highly employable graduates with global outlooks and relevant, transferrable workplace skills. One of the ways the university accomplishes this is through a strong employability focus embedded into every degree. Students have access to unlimited lifelong career guidance through the Career Development Centre, which can help with setting up internships and work experience, provide industry engagement opportunities, and even interview and resume writing tips. There's also the Beyond Bond professional development program, the Core Curriculum – in which all undergraduate students learn key 'soft skills' such as leadership, communication and critical thinking – and the co-curricular entrepreneurship program, Transformer.

**Vice-Chancellor
and President**

Professor Paddy Nixon
02 6201 5000
ovc@canberra.edu.au

Chancellor

Ms Lisa Paul AO PSM

Contact details

University of Canberra
Bruce ACT 2601
02 6201 5111

Website

canberra.edu.au

Campus locations

- Canberra
- Sydney
- Melbourne
- Queensland
- China
- Bhutan
- Vietnam
- Singapore

The University of Canberra (UC) is embedded in the fabric of Canberra, Australia's capital, and this shapes our mission – fostering innovation, meeting community needs, and equipping future leaders with professional careers and lifelong connections.

UC takes pride in its unique focus on community health, and drives exciting new frontiers in science and technology.

We live and breathe sport, it is the heart of our community, and we provide a home for Canberra's creative industries.

For over fifty years, UC has been instrumental in building an education workforce for the advancement of future generations.

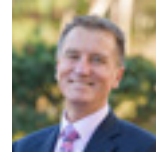
Our expertise in business, government and legal frameworks supports the ACT region's economic growth, the nation's political acumen and the overall evolution of law.

UC ensures our students' success through progressive teaching, impactful research, and strong ties with industry. Our students enjoy immersive learning, that incorporates real-world experience through internships and placements, that deliver employability outcomes.

Our graduates are set up for stellar career opportunities, endorsed by our number one ranking for full-time employment in Canberra. (*Good Universities Guide, 2024*).

UC is ranked in the top 20 of the *Times Higher Education* (THE) Young University World Rankings (2023), and in the top five globally for reducing inequalities in the *THE* Impact Rankings (2023).

As we continue to expand our campus, UC has maintained its distinctive character for over 30 years. Our location in Australia's capital has shaped UC as progressive and dynamic – connected to the community and committed to building a sustainable, prosperous future.

**Vice-Chancellor
and President**

Professor Nick Klomp
07 4930 9752
vc-cquniversity@cqu.edu.au

Chancellor

Mr Graeme Innes AM

Contact details

CQUniversity Australia
554-700 Yaamba Road
Norman Gardens QLD 4701
07 4930 9777
communicate@cqu.edu.au

Website

cqu.edu.au

Campus locations

- Adelaide
- Brisbane
- Bundaberg
- Cairns
- Emerald
- Gladstone
- Mackay
- Melbourne
- Rockhampton
- Sydney
- Townsville



Originally founded in Rockhampton in 1967, as the Queensland Institute of Technology (QIT) Capricornia, CQUniversity Australia was granted full University status in 1992 and now has more than 30,000 students studying online and on-campus across Australia.

CQUniversity is proud to be recognised as Australia's most inclusive university with some of the highest ratios of students from disadvantaged, mature age, Aboriginal and Torres Strait Islander, and first-in-family backgrounds.

It is this strong focus on participation and accessibility, that has seen CQUniversity firmly establish itself as one of the largest universities based in regional Australia. CQUniversity is Queensland's only dual sector university and is also a pioneer in the delivery of distance and online education.

After more than half a century working with stakeholders in regional Australia, CQUniversity is now a renowned research institution in several key disciplines and the benchmark leader for how universities should engage and collaborate with communities and industry. It is also recognised by Social Traders as Australia's only certified social enterprise university.



Vice-Chancellor and President

Professor Scott Bowman AO
08 8946 6040
vc@cdu.edu.au

Chancellor

The Hon Paul Henderson AO

Contact details

Ellengowan Drive
Casuarina NT 0909
08 8946 6666
study@cdu.edu.au

Website

cdu.edu.au

Campus and centre locations

- Casuarina (Darwin)
- Darwin City
- Alice Springs
- Palmerston
- Katherine
- Sydney
- Brisbane
- Darwin Waterfront
- Nhulunbuy
- Tennant Creek

With our home and our heart in the Northern Territory, we embrace the inclusive, resilient, and courageous spirit of the Territory. We are a deeply connected university, working in close partnership and collaboration with First Nations people, our communities, industry and government.

We are the only university based in the Northern Territory, which gives our teaching and learning experience a flavour that is unique in Australia’s education landscape. Our connection spans beyond the Northern Territory through our digital and remote delivery, and internationally through our world-leading research.

We are proud to be Australia’s first dual-sector university and the largest training provider in the Northern Territory, building a skilled workforce while also providing pathways into higher education.

With ten campuses and centres across Australia, CDU can deliver unique student experiences and offer training where it’s needed. Our on-country trainers engage with students no matter where they live, often driving thousands of kilometres to deliver training and support in the heart of Australia and its remote communities.

Flexibility and supportive learning experiences are key to engaging with our students. CDU has one of the most diverse student cohorts that includes more than 20% First Nations students. Our success in achieving this diversity can be attributed to providing a wide range of study options, personalised support and bringing mentors and community leaders into the university.

Research outcomes at CDU are strongly aligned with the United Nations’ Sustainable Development Goals. Our research is relevant, impactful and attracts research students who are focused on solving tough problems. It’s one reason why CDU has an eminent research reputation in environment and ecology, energy, tropical health, indigenous issues, sustainable business, and technology.

We are proud to be making a difference in the Northern Territory and beyond, and we’ll continue to innovate and foster world-changing ideas.



Vice-Chancellor and President

Professor Renée Leon PSM
02 6338 4209
vc@csu.edu.au

Chancellor

Dr Michele Allan AO

Contact details

Panorama Avenue
Bathurst NSW 2795
1800 275 278

Website

csu.edu.au

Campus locations

- Albury-Wodonga
- Bathurst
- Canberra
- Dubbo
- Goulburn
- Orange
- Parramatta
- Port Macquarie
- Sydney
- Wagga Wagga

At the heart of Charles Sturt University’s approach to education is the Wiradjuri phrase yindyamarra winhanganha – ‘the wisdom of respectfully knowing how to live well in a world worth living in’.

Charles Sturt is Australia’s leading regional university, offering more than 250 courses delivered on a network of regional campuses. Charles Sturt is also Australia’s most experienced online university and the nation’s online university of choice.

Charles Sturt has a proud history of partnering with industry and businesses to benefit our students and the local community.

Students

Charles Sturt has been Australia’s leading university for undergraduate full-time employment for the last seven years, and has an outstanding record of graduating First Nations students and those from rural and remote backgrounds. The university’s strong links to industry connect students with relevant, real-world experience.

Research

Charles Sturt University has a social responsibility to use its expertise to support and deliver outcomes that foster prosperous and resilient regional communities. Our goal is to influence and contribute to the economic, social, and environmental sustainability and well-being of our regional, national, and global spheres.

People

Central to the University strategy is the goal to instil a culture of excellence across all aspects of the University’s operations, fostering mutual support, empowerment and inspiration to collectively achieve excellence.

Social responsibility

Charles Sturt is a leader in sustainable practices, becoming the first Australian carbon neutral university and ranking in the top five per cent of universities globally in the Times Higher Education Impact Rankings in 2023.



Vice-Chancellor

Professor Harlene Hayne CNZM
vc@curtin.edu.au

Chancellor

Dr Andrew Crane

Contact details

Kent Street
Bentley WA 6102
08 9266 9266

Website

curtin.edu.au

Campus locations

- Perth
- Kalgoorlie
- Malaysia
- Singapore
- Dubai
- Mauritius

Curtin University is a vibrant young university with a growing global presence and dedication to making a positive difference for people and our planet – through all our teaching, research and engagement activities.

Ranked among the top one per cent of universities worldwide*, Curtin is known for embracing innovation, for building strong partnerships with industry and communities, and for graduates who are career-ready and keen to create positive change.

Our student experience

Curtin focuses on providing an immersive learning experience with industry-connected and international study opportunities for our students, in an environment that promotes diversity and inclusion. These approaches are why Curtin is seen as a progressive university, with the culture and the mindset to drive economic and social benefits that transform lives and the future.

Research and innovation

Curtin leads research that Australia and our global partners need now and for the future. Our major industry collaborations and international endeavours include established partnerships with HII and Babcock Australasia, to advance our national resilience capabilities.

At the Curtin Institute for Energy Transition, we're bringing together multidisciplinary teams to reframe how we think about the urgent need to decarbonise the world's energy system. Australia's Resources Technology and Critical Minerals Trailblazer is leveraging our research expertise to accelerate the energy transition through enhanced critical minerals extraction and processing.

Our Commercialisation team works with researchers, investors and industry partners to take Curtin innovations, assess their commercial potential and find the best ways of bringing them to market. Our established reputation for innovation echoes our ambition to make tomorrow better for people all over the world.

* ARWU 2023



Vice-Chancellor and President

Professor Iain Martin
03 5227 8501
vc@deakin.edu.au

Chancellor

Mr John Stanhope AM

Contact details

Head Office, Geelong Waterfront Campus, Locked Bag 20001, Geelong, VIC 3220
03 5227 1100

Website

deakin.edu.au

Campus locations

- Geelong Waterfront
- Geelong Waurn Ponds
- Melbourne Burwood
- Warrnambool

Established in 1974, Deakin is one of Australia's most progressive universities, leading in the innovative use of digital technologies and online learning, and blending this capability across its distinctive campus precincts in Melbourne, Geelong and Warrnambool.

'Balanced excellence' in education and research

Deakin has achieved a balance of high-quality research with an education experience that is consistently rated as one of the best in the country.

For 13 consecutive years, Deakin has been rated number one for student satisfaction in Victoria. Deakin provides opportunities for learners at all stages of their lives and careers, enabling flexible and non-traditional pathways into education.

The university's four faculties offer a comprehensive range of courses across the arts, science, sport, nutrition, architecture, business, law, medicine, optometry, engineering, nursing, psychology and teaching.

Deakin has a thriving research culture known for its multidisciplinary collaborations and is rated in the top one per cent of universities in the world.

Community, government and industry engagement

Deakin emphasises mutually beneficial partnerships and real-world impact across its areas of strategic priority: health and wellbeing, smarter technologies, sustainability, society and culture, and building safe and secure communities.

Deakin's industry precincts provide an important link between technological innovation and successful industry outcomes.

A global university

Deakin is global in its outlook, activities and impact, with partnerships in 65 countries and offices in China, India, Latin America, Europe, Indonesia, Malaysia, Vietnam, Pakistan and Singapore.

Over 325,000 alumni live and work across the globe and their achievements are the best measure of Deakin's success.



Vice-Chancellor

Professor Steve Chapman CBE
08 6304 2205
vc@ecu.edu.au

Chancellor

Ms Denise Goldsworthy AO

Contact details

270 Joondalup Drive
Joondalup WA 6027
08 134 328

Website

ecu.edu.au

Campus locations

- Joondalup
- Mount Lawley
- Bunbury

Established in 1991, in Western Australia, Edith Cowan University (ECU) has grown into a high-quality university with exceptional student satisfaction rates and internationally recognised research. The University was named after Edith Dircksey Cowan, the first woman to be elected to an Australian Parliament. Her life was dedicated to the belief that education was the key to growth, change and improvement in society. At ECU we are guided by our values of integrity, respect, rational inquiry, personal excellence and courage.

With more than 30,000 undergraduate and postgraduate students, including international students from 100 countries, our eight schools collectively deliver a diverse range of courses across arts and humanities, business and law, education, engineering, medical and health sciences, nursing and midwifery, science and the Western Australian Academy of Performing Arts.

Research at ECU extends knowledge and improves the quality of life for Australians and people across the globe. Our research priorities focus on solving real-world problems across social, economic, physical and environmental domains.

We are a university that values diversity and this is exemplified by our multicultural student cohort spanning a wide range of ages. We are immensely proud of our Centre for Australian Indigenous Education and Research, Kurongkurl Katitjin and are committed to gender equality - advancing this commitment in Australia through our membership of the Athena SWAN Charter.

Our industry-relevant teaching and research, supportive study environment and award-winning facilities enable ECU students to do more than just survive in this world – they thrive in it.



Vice-Chancellor and President

Professor Duncan Bentley
vc@federation.edu.au

Chancellor

Mr Terry Moran AC

Contact details

University Drive
Mt Helen VIC 3350
1800 333 864
info@federation.edu.au

Website

federation.edu.au

Campus locations

- Ballarat
 - Camp Street
 - Mt Helen
 - SMB
- Berwick
- Gippsland
- Wimmera

At Federation University Australia, we aim to make a real difference to the lives of every student who walks through our doors, and to the communities we help build and are proud to be part of. Our modern approach to teaching and learning within our higher education and TAFE offerings makes us one of Australia’s leading regional universities.

Today, we are proud to have 18,500 domestic and international students and 125,000 alumni across Australia and the world. Into our supportive, inclusive and thriving community, we welcome people from all backgrounds and cultures – this is reflected in our number one ranking in Australia for first-generation enrolments by the Good Universities Guide.

Federation is Australia’s first co-operative university, getting students work and world ready through direct connection to employers and co-op experiential learning. Co-op means our students can succeed wherever they start on their study journey through a suite of courses co-designed, co-developed and co-delivered in partnership with industry. In 2024, we are offering Co-op degrees across Science, Engineering, Business and IT. Between now and the end of 2025 we will embed Co-op across our suite of University and TAFE courses, with delivery commencing in 2026.

Federation is rated by the Good Universities Guide as the number one university in Australia for first generation student enrolment and number one in Victoria for undergraduate starting salary and social equity, while we are also ranked number one in Australia for Overall Education Experience in the Engineering & Technology and Law & Paralegal disciplines.

The research conducted at Federation University is world class with Business and Economics, Clinical and Health, Computer Science, Education, Engineering, Life Sciences, Psychology, and Social Sciences included in the Times Higher Education (THE) Subject rankings for 2023. Federation us also rated in the top 151-200 THE Young Universities worldwide.



Vice-Chancellor and President

Professor Colin Stirling
08 8201 2101
ovc@flinders.edu.au

Chancellor

John Hood

Contact details

GPO Box 2100
Adelaide SA 5001
08 8201 3911
admissions@flinders.edu.au

Website

flinders.edu.au

Campuses and Locations

South Australia

- Bedford Park
- Adelaide – Festival Plaza
- Tonsley • Barossa
- Berri • Mount Gambier
- Murray Bridge
- Renmark
- Victor Harbor

Northern Territory

- Darwin
- Alice Springs
- Katherine
- Nhulunbuy
- Tennant Creek

Flinders University is a bold innovator, an imaginative partner, and a progressive place to learn, research and thrive.

Ranked in the top two per cent of world universities, we are home to almost 26,000 students, over 2000 staff, and exceptional student experience.

Flinders is the place to be fearless.

An education trailblazer

Distinguished by establishing Australia’s first medical course integrated into a hospital, Flinders today is a comprehensive university that offers more than 500 degree programs, including Australia’s only undergraduate nuclear major.

A national leader in rural and remote health, Flinders delivers first-class medical, nursing and allied health education across regional South Australia and Northern Territory, including the NT’s Doctor of Medicine.

Our pioneering approach to creativity and enterprise means every student has access to our award-winning Flinders New Venture Institute, ranked among the top university business accelerators in the world.

Solving wicked problems

Flinders is Australia’s fastest growing research university, with our excellence reflected in 140% growth in external funding in the past five years.

Our research strengths cover a wide range of fields, from biomedical and clinical sciences, to defence, engineering, nursing, culture, policy and society, archaeology, health and human behaviour, molecular technology, water, and environment.

Brave and innovative

At Flinders, our intrepid approach to collaboration sets us apart. It’s why we’re the first university in Australia to form a partnership with a US Navy research centre.

Globally, we have over 100 partner institutions across 33 countries, and our 130,000 alumni are driving social and economic advances worldwide.

We are, as they say, fearless.



Vice-Chancellor and President

Professor Carolyn Evans
07 5552 8178
vc@griffith.edu.au

Chancellor

The Hon Andrew Fraser

Contact details

Parklands Drive
Southport QLD 4222
07 5552 8800

Website

griffith.edu.au

Campus locations

- Gold Coast
- Logan
- Mt Gravatt
- Nathan
- South Bank

Griffith University is a world-class, values-led university. Its teaching and research prioritise innovation and social impact, reflecting its belief that everyone deserves a chance to make a difference—for themselves and others.

Ranking in the top 2 per cent of universities worldwide, Griffith consistently appears in the top 300 of leading global indices including the Times Higher Education World University Rankings and Impact Rankings, QS University Rankings and more, and rates highly as a young university.

The University is a national leader in teaching awards and citations, delivering high-quality degrees designed to prepare students for the future, developed in consultation with industry, and based on cutting-edge research.

Social and environmental responsibility drive everything Griffith does, from pioneering teaching in modern Asian studies and environmental science to its long-time commitment to Aboriginal and Torres Strait Islander people, social justice and sustainable practices.

Griffith offers more than 200 degrees in architecture, construction and planning; business and government; criminology and law; education; engineering, IT and aviation; humanities, languages and social science; medicine, dentistry and health; music and performing arts; science and environment; and visual and creative arts.

Griffith students benefit from its extensive network of industry partners to gain the skills and confidence that employers want, giving them an edge in the job market.

As it approaches its 50th anniversary in 2025, the University is proud to have fostered a global community of more than 300,000 students, staff and alumni collectively dedicated to doing the things that matter today to create a brighter future for all.



**Vice-Chancellor
and President**

Professor Simon Biggs
07 4781 4165
vc@jcu.edu.au

Chancellor
Professor Ngiare Brown

Contact details
1 James Cook Drive
Douglas 4814
07 4781 4111
study@jcu.edu.au

Website
jcu.edu.au

Campus locations

- Cairns
- Singapore
- Townsville

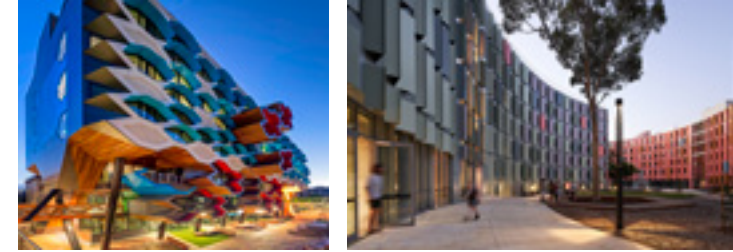
James Cook University is unique among Australian universities, woven into the intellectual, economic and social fabric of its tropical locations.

JCU is defined by the tropics. Its main campuses are in the heart of the tropics – Cairns, Singapore and Townsville. The campuses are complemented and extended by regional and remote study centres and research stations. JCU's Australian campuses and field stations are located near the World Heritage-listed Great Barrier Reef Marine Park and the rainforests of the Wet Tropics region. This unique environment attracts students from around the world.

JCU plays a key role in preparing the professional workforce for northern Australia, and the university offers a comprehensive suite of professionally accredited programs including medicine, dentistry, pharmacy, physiotherapy, occupational therapy, speech therapy, veterinary sciences, psychology, nursing, sport and exercise science, engineering, law, education, and a range of programs in business, science, social science and humanities.

JCU is ranked among the world's top 400 universities (Academic Ranking of World Universities). The university has an international reputation for the quality of its teaching and research, with recognised strengths in environmental science and management; coral reef science, ecology, and fisheries sciences; geology; evolutionary biology; organic and inorganic chemistry; oceanography; physical geography and environmental geoscience; medical microbiology, tropical health and medicine, vector-borne diseases; immunology; archaeology; and linguistics.

JCU is home to more than 20 major research centres and institutes, including The Cairns Institute and the Australian Institute of Tropical Health and Medicine.



**Vice-Chancellor
and President**

Professor Theo Farrell
03 9479 2000
vc@latrobe.edu.au

Chancellor
The Hon John Brumby AO

Contact details
Plenty Road
Bundoora VIC 3086
03 9479 1111

Website
latrobe.edu.au

Campus locations

- Albury-Wodonga
- Bendigo
- Melbourne (Bundoora)
- Melbourne (Collins St)
- Mildura
- Shepparton
- Sydney

For over 50 years, La Trobe University has been transforming people and societies.

Ranked in the top one per cent of universities worldwide, we're addressing the major issues of our time. Proudly, all our broad areas of research are rated 'at', 'above' or 'well above world standard', and our graduates are #3 in Australia and #1 in Victoria for overall employer satisfaction.

We embrace the power of equality and diversity and believe in a student experience closely aligned with industry and showcasing the breadth of Australian culture.

Our focus on social impact and inclusivity is why we're ranked fourth globally for our overall contribution to the UN's Sustainable Development Goals. This includes being first in Australia for gender equality and fifth internationally for our research in disease, health and healthcare areas.

Across all seven of our campuses, we're committed to ensuring our students, researchers and partners remain at the forefront of innovation and technology. We aim to encapsulate that in our upcoming \$5 billion University City of the Future at Bundoora Campus.

We have an eye firmly set on the future and we're making real impact, today.



Vice-Chancellor and President

Professor S. Bruce Downton
02 9850 7440
vc@mq.edu.au

Chancellor

Dr Martin Parkinson AC PSM

Contact details

Wallumattagal Campus
Macquarie Park NSW 2109
02 9850 7111

City Campus, Sydney

Level 24
123 Pitt Street
Sydney NSW 2000
02 9234 1700

Website

mq.edu.au

Campus locations

- Wallumattagal Campus, Macquarie Park
- City Campus, Sydney

A university powered by human collaboration

Macquarie University is ranked among the top one per cent of universities in the world. Since our foundation 60 years ago, we've aspired to be a different type of university – one focused on fostering collaboration between students, academics, industry and society. As a collective, we're advancing world-class theoretical thinking and translating it into real-world solutions.

Where collaboration meets innovation

Macquarie's Wallumattagal Campus is uniquely located in the heart of Australia's largest innovation district. With more than 300 companies located around the campus, our 45,000 students can tap into career-boosting industry connections, while our 3000 staff can access research and innovation opportunities with world-leading organisations.

Expanding the frontiers of knowledge

Macquarie has an enviable reputation for research and teaching excellence. One hundred per cent of our research is rated at world standard or above; we're ranked among the top 10 universities in Australia in many research disciplines; and three of our subjects are ranked among the top 50 globally and 7 among the top 100.

A proud tradition of innovating

Macquarie has a robust record of innovation. We pioneered the technology that underpins wi-fi, developed the first synthetic funnel-web spider antivenom and designed a sterilisation technique that combats fruit flies. Today, we're focused on finding cures for motor neurone disease, Parkinson's disease and dementia.

Building successful graduates

Macquarie's pioneering approach to teaching and learning is built around a connected community: students are considered co-creators in their learning experience, while their degrees are linked to the latest research discoveries.



Vice-Chancellor

Professor Duncan Maskell
03 8344 6134
vc@unimelb.edu.au

Chancellor

Ms Jane Hansen AO

Contact details

Grattan Street, Parkville
VIC 3010
03 9035 5511

Website

unimelb.edu.au

Campus locations

- Parkville
- Burnley
- Creswick
- Dookie
- Shepparton
- Southbank
- Werribee

Situated on the unceded lands of the Wurundjeri Woi Wurrung, Bunurong, Yorta Yorta, and Dja Dja Wurrung peoples, the University of Melbourne is a place of discovery and enquiry. Our purpose is to benefit society through transformative education and research.

Established in 1853, we are one of Australia's oldest universities and the first in Victoria. Today, our vibrant community comprises over 52,000 students, including 41 percent international students from 150 countries. Our students are supported by 10,000 academic and professional staff. This diversity of experience, backgrounds, and perspectives of all members of our community enriches the fabric of our university.

As a leading research-intensive university, our dual purposes of education and research are reflected in the experience we offer our students. Our educational approach encourages students to explore their passions as well as fostering deep expertise in their chosen fields. We nurture a culture of curiosity and creativity, providing students with the opportunity to learn from academics and researchers at the forefront of their respective disciplines.

Our graduates emerge as well-rounded, thoughtful and highly skilled professionals who make a positive impact across the globe. Our network of more than 475,000 alumni around the world attests to the transformative impact of a University of Melbourne education.

With state-of-the-art facilities and a commitment to interdisciplinary collaboration, our institution remains a driving force in shaping the future through impactful research. Embedded within world-class research and innovation precincts, we actively engage with communities and partners to help address major social, economic, health and environmental challenges.

Our commitment to excellence has earned us a place among the world's best universities, delivering education and research that is global in reach, ambition, and impact.



**Vice-Chancellor
and President**

Professor Sharon Pickering
03 9902 9851
sharon.pickering@monash.edu

Chancellor

Mr Simon McKeon AO

Contact details

Wellington Road
Clayton, Victoria 3800
03 9902 6000

Website

monash.edu

Campus locations

- Clayton
- Caulfield
- Parkville
- Peninsula
- Malaysia
- Indonesia

Monash University is a modern, research-intensive university, delivering education and research excellence in Australia and across the Indo-Pacific.

We create lasting global change by collaborating with universities, governments and industry through innovation and enterprise to advance new ideas and translate exciting technologies. Our strategic plan, *Impact 2030*, charts the path towards realising our purpose through research and education to address the challenges of the age – climate change, geopolitical security and thriving communities – for the betterment of present and future generations.

We transform students into global citizens by providing an excellent and contemporary learning experience across our four Australian campuses, and our campuses in Malaysia and Indonesia. We have a major presence in India and China, and a significant centre and research foundation in Italy, and offer rich educational experiences including the Global Immersion Guarantee, which enable graduates to stand out in the employment market.

We harness the research and expertise of our global network of talent and campuses to produce tangible, real-world solutions and applications at the Monash Technology Precinct, where our ethos of change catalyses collaboration between researchers, infrastructure and industry, and drives innovation through commercial opportunities that deliver positive impact to human lives.

Our reputation for education and research excellence ranks us in the world's top-50 universities in the QS World University Rankings 2024 (42nd), QS Sustainability Rankings 2024 (23rd), Times Higher Education Impact Rankings 2023 (21st), and US News and World Report Best Global Universities Rankings 2022-23 (37th). We are a founding member of Australia's Group of Eight, and a member of the Association of Pacific Rim Universities.



**Vice-Chancellor
and President**

Professor Andrew J Deeks
08 9360 6300
vc@murdoch.edu.au

Chancellor

Gail McGowan PSM

Contact details

90 South Street
Murdoch WA 6150
08 9360 6000

Website

murdoch.edu.au

Campus locations

- Perth
- Mandurah
- Rockingham
- Singapore
- Dubai

Since opening our doors in 1974, Murdoch University has been a university of difference. The second university in Western Australia, Murdoch was established on the lands of the Whadjuk and Binjareb Noongar people, the boodjar (country) having been a place of learning for thousands of years - we are proud to continue this tradition.

Our new strategy, Ngala kwop biddi: Building a brighter future, together, reaffirmed our purpose, focusing on three strategic themes: Sustainability; Equity, Diversity and Inclusion; and First Nations.

Although the challenges facing our world are considerable, Murdoch is ideally placed to contribute to solutions, while enabling our students and staff to realise their full potential.

This commitment also extends within, as we take action to achieve a truly sustainable campus with targets for carbon neutrality across our operations, zero per cent waste to landfill, and a net zero transport plan by 2030.

Murdoch's flagship location in Perth is one of the largest urban campuses in Australia, boasting a working farm and a vast expanse of natural bushland teeming with unique wildlife.

At the heart of the campus is Boola Katitjin, a dynamic teaching space that combines modern, sustainable design and digital technology, where students, teachers, and industry can learn, collaborate and socialise.

In Perth's southern corridor, Murdoch's Mandurah campus is home to nursing degrees taught in state-of-the-art simulation suites, and our Rockingham campus hosts our pro bono law clinic and some of our successful enabling programs.

Our international campuses in Singapore and Dubai deliver a range of undergraduate and postgraduate courses from vibrant, state-of-the-art facilities.

Across the entire university, our shared purpose is to change lives and society for the better through accessible education and research, contributing to the solution of societal and environmental challenges and providing an inclusive, caring community in which everyone can realise their potential.



Vice-Chancellor and CEO

Professor Chris Moran
02 6773 2004
vc@une.edu.au

Chancellor

Mr James Harris

Contact details

Elm Avenue,
Armidale NSW 2351
02 6773 3333

Website

une.edu.au

Campus locations

- Armidale
- Parramatta
- Tamworth
- Taree

Australia’s oldest regional university

Celebrating 70 years as a University in 2024, the University of New England (UNE) was formed on 1 February 1954 as an independent regional university. With seven decades of experience, UNE is one of Australia’s great teaching, training and research universities.

In pioneering distance education, UNE has enriched the lives of many people who would otherwise have been unable to pursue university studies.

Future fit your life

Over 85 per cent of UNE’s students study online. With campuses in Armidale, Tamworth (under construction), Taree and western Sydney, as well as eight regional study centres, students enjoy flexible learning that suit their personal and professional circumstances.

College students, including international students, enjoy a vibrant residential experience. Accommodation options range from traditional, catered colleges to independent apartment-style living.

Unsurpassed quality

As published in the 2024 Good Universities Guide, UNE has achieved the maximum five stars for overall student experience for the past 18 years - a feat unmatched by any other Australian public university.

Students choose from a range of courses in the arts, humanities, education, health, economics, business, law, medicine, social and behavioural sciences, sport and exercise, science, agriculture, and rural and environmental sciences. UNE’s bespoke courses allow working adults to design a personalised degree program based on their needs.

Real-world research

UNE is internationally recognised for contributions to applied animal genetics and breeding, mathematics, agriculture, law, social sciences, and health and medicine in a regional context. The UNE PhD (Innovation) program embeds practical research projects in industries and communities.



Vice-Chancellor and President

Professor Attila Brungs
02 9385 2855
president@unsw.edu.au

Chancellor

Mr David Gonski AC

Contact details

Kensington NSW 2052
02 9385 1000
Follow @unsw

Website

unsw.edu.au

Campus locations

- Kensington
- Paddington
- Canberra at ADFA

UNSW Sydney is a powerhouse of cutting-edge research, teaching, and innovation. We rank among the top 20 universities worldwide*, with more than 66,000 students and a 7800+ strong research community.

Research for public good

At UNSW, we strive to honour our motto – Knowledge through heart, hand and mind. Pioneering research and sustained innovation are addressing some of the critical issues of today, from climate change and renewable energies, RNA research and lifesaving medical treatments through to informing policy and expert commentary in human rights, the constitutional recognition of Indigenous Australians and public health. UNSW placed equal fifth globally and first in Australia in the inaugural QS World University Sustainability Rankings 2023.

Future-focused graduates

UNSW is dedicated to shaping forward-thinking graduates who make a positive impact. UNSW graduates are among the most employable in the world and we are number one in Australia for alumni outcomes**. With a strong culture of entrepreneurship, UNSW’s Founders Accelerators program supports more than 200 start-ups and provides entrepreneurial skills training to over 5000 individuals each year.

Robust international networks

We are proud of our national and international networks, which support our belief that strength through collaboration will enable society to solve its greatest challenges. UNSW is a founding member of the Group of Eight, a coalition of Australia’s leading research-intensive universities, and the prestigious Universitas21 international association.

The main UNSW campus is in Kensington, seven kilometres from the Sydney CBD. Other major campuses are the Art & Design campus in Paddington and UNSW Canberra at the Australian Defence Force Academy.

* 2024 QS World University Rankings

**2022 QS Graduate Employability Rankings



Vice-Chancellor and President

Professor Alex Zelinsky AO
02 4921 5101
alex.zelinsky@newcastle.edu.au

Chancellor

The Hon Patricia Forsythe AM

Contact details

University Drive
Callaghan NSW 2308
02 4921 5000
askuon@newcastle.edu.au

Website

newcastle.edu.au

Campus locations

- Newcastle (Callaghan)
- Newcastle (City)
- Central Coast
- Sydney
- Singapore

At the University of Newcastle, we are committed to being a world-leading university for our regions with an outstanding student experience. We are ranked in the top 175 universities in the world and for more than 55 years we have been delivering superior education and undertaken world-class research to help improve the lives of our communities.

Outstanding student experiences

Our vibrant campuses across Newcastle, the Central Coast, Sydney and Singapore provide spaces to learn, socialise and collaborate. These welcoming spaces are designed to inspire our more than 37,000 students and our staff to make a difference. We pride ourselves on offering an outstanding experience for our students and, regardless of their course, every student starting a degree at our University now undertakes a Career-ready placement as part of their degree. The opportunity to work with industry as part of their study means graduates are not only job ready, but life ready.

A foundation of equity and excellence

We believe that every student with drive and aspiration is supported to succeed at the University of Newcastle, regardless of background or circumstance. That's why we are proud that one in two of our undergraduate students are the first in their family to undertake tertiary education and why we are committed to creating pathways to university for Aboriginal and Torres Strait Islander students. This commitment is fundamental to how we teach and research, how we work with industry partners and local communities, and how we engage with our staff and students.

Better connected

We are a globally connected university that is committed to our region. We know that a better tomorrow lies in our ability to find new solutions to some of the planet's greatest challenges and our students can feel confident they are receiving a world-class education from experts in their fields, no matter what their area of study.



Vice-Chancellor

Professor Francis Campbell
vc@nd.edu.au

Chancellor

The Hon Chris Ellison

Contact details

Fremantle
32 Mouat St
Fremantle WA 6959
08 9433 0555
fremantle.reception@nd.edu.au

Sydney

140 Broadway
Chippendale NSW 2008
02 8204 4400
sydney@nd.edu.au

Website

notredame.edu.au

Campus locations

- Fremantle
- Sydney
- Broome

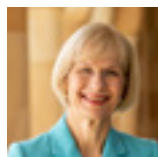
The University of Notre Dame Australia is a national Catholic university with more than 12,000 students across its campuses in Fremantle and Broome, Western Australia, and Sydney, New South Wales. The university also has seven clinical schools located in regional NSW and Victoria.

The university's three faculties (the Faculty of Arts, Sciences, Law and Business, the Faculty of Education and Philosophy and Theology, and the Faculty of Medicine, Nursing, Midwifery and Health Sciences) offer undergraduate, postgraduate and research degrees.

The university provides excellent standards of teaching, scholarship, professional training, and research with established networks in healthcare, education, and social services. The university has developed a solid platform of research engagement across its six focus areas of ethics, philosophy, theology, Catholic education, health, and Indigenous studies, stemming from three principal research institutes: the Institute for Ethics & Society in Sydney, the Institute for Health Research in Fremantle, and the Nulungu Research Institute based in Broome.

The university aims to empower a new generation of ethical leaders and help prepare students to navigate the challenges of an ever-changing work environment by encouraging them to view the world from a new perspective. Critical thinking is at the core of each degree at Notre Dame, an approach that equips students for fulfilling lives, as well as successful careers.

In results from the Federal Government's Quality Indicators for Learning and Teaching surveys, Notre Dame is the number one university in Australia for overall employment of graduates (2021 Graduate Outcomes Survey – Longitudinal, undergraduate category).



**Vice-Chancellor
and President**

Professor Deborah Terry AO
07 3365 1300
vc@uq.edu.au

Chancellor

Mr Peter N Varghese AO

Contact details

Brisbane QLD 4072
07 3365 1111
ask@uq.edu.au

Website

uq.edu.au

Campus locations

- St Lucia
- Gatton
- Herston
- Dutton Park

The University of Queensland (UQ) is one of Australia's leading teaching and research universities and is a global top 50 university. In the 2022 Aggregate Ranking of Top Universities, UQ ranked 2nd in Australia and 42nd in the world. UQ's main campus is located in Brisbane, host city of the 2032 Olympic and Paralympic Games.

Teaching

UQ has won more national teaching awards than any other Australian university, including Australian University Teacher of the Year several times. More than 55,000 students – including 21,000 international from 137 countries and 20,000 postgraduate students – study with UQ. Students can choose from more than 330 programs on offer, many with work integrated learning opportunities. Through our engaged alumni and industry partnerships, our students also have the opportunity to build networks and access internships.

Research

UQ has more than 2,500 academics and researchers and around 3,800 active research projects, seeking solutions to the world's biggest challenges and opportunities. Our researchers are the leading recipients of Australian Research Council fellowships and awards nationally. In 2023, UQ had the equal highest number of Highly Cited Researcher awards of any Australian university. UQ is the leader of research commercialisation in Australasia and the leading university in Australia for active startups.

Community

UQ has a global community of 311,000 graduates from 184 countries and 450+ partners across the globe. This strong global network is key to our commitment of delivering for the public good through excellence in education, research and engagement with our communities – both locally and globally.



**Vice-Chancellor
and President**

Professor Margaret Sheil AO
07 3138 8086
vc@qut.edu.au

Chancellor

Ms Ann Sherry AO
07 3138 4056
qutchancellor@qut.edu.au

Contact details

2 George Street
Brisbane QLD 4000
07 3138 2000
askqut@qut.edu.au

Website

qut.edu.au

Campus locations

- Brisbane:
- Gardens Point
 - Kelvin Grove

QUT is a major Australian university with a global reputation and a 'real-world' focus. Our courses equip our students and graduates with the skills and mindset they need to realise their full potential in a rapidly changing world. We are an ambitious institution, with a growing research output focused on technology and innovation. QUT ranks in the world's top 200 universities.

Our strategy establishes QUT as 'the university for the real world' and connects our transformative education, student experience and research so they are relevant to our communities.

With more than 50,000 students across two inner-city campuses in Brisbane, QUT offers academic programs in fields spanning business, creative industries, education, engineering, health, law, science, and social justice.

QUT is committed to embedding Indigenous Australian cultures, knowledges and perspectives across everything we do. In 2025, we will open the Faculty of Indigenous Knowledges and Culture which will expand current education and research programs for all QUT students and partner organisations.

We are transforming the learning experience, embedding work-integrated learning and focusing on developing entrepreneurial skills. We offer executive education and professional development, flexible learning through QUT Online, and pathways into our undergraduate programs through QUT College.

And our QUT sports strategy, Ahead of the Game, allows us to challenge conventional thinking in sport at all levels – as a leader in sports technology with a focus on health and wellbeing.

We strive to develop graduates with the skills and attributes to be job ready in a rapidly changing work environment and in 2025 QUT You will launch – an innovative new curriculum that will further strengthen the university experience for our students and prepare them for the real world.

QUT is well-known for our strong links to industry and government, and our inter-disciplinary teams create high-impact research in areas as diverse as climate change mitigation, digital media, materials science, and biomedical innovation.



Vice-Chancellor and President

Professor Alec Cameron
03 9925 1999
vc@rmit.edu.au

Chancellor

Ms Peggy O’Neal AO

Contact details

124 La Trobe Street
Melbourne VIC 3000
03 9925 2000
rmit.edu.au/contact

Website

rmit.edu.au

Campus locations

- Melbourne City
- Bundoora
- Brunswick
- Ho Chi Minh City
- Hanoi

RMIT is an international university of technology, design and enterprise with more than 90,000 students and close to 10,000 staff globally. We empower people and communities to adapt and thrive across generations, with education, research and civic engagement that are applied, inclusive and impactful. Postgraduate, undergraduate, vocational education, foundation studies and online programs offer students a variety of work-relevant pathways.

Our three substantial campuses in Melbourne are located in the City, Brunswick and Bundoora, along with other Victorian locations. We also have two campuses (Saigon South and Hanoi) and an English language centre in Vietnam and a research and innovation hub in Spain. In addition, programs are offered through partners in Singapore, Hong Kong, Sri Lanka, Indonesia, India and China, with research and industry partnerships across the globe.

We continue to consolidate our international reputation and now rank 140th in the 2024 QS World University Rankings and appear in the 251-300 band of the 2024 Times Higher Education World University Rankings. Strong industry connections, forged over 136 years, remain integral to RMIT’s leadership in education, applied and innovative research, and to the development of our graduates as skilled global citizens. This is why our alumni community is known for being highly employable and ready to adapt in complex times.

Alongside industry-relevance, creativity and inclusivity are hallmarks of an RMIT education. Our diverse global community of more than 500,000 graduates live, work and contribute in more than 150 countries around the world. Recognising that education is lifelong, many also return throughout their careers to refresh and update their skills or change career direction altogether.

As a collective and as individuals, we commit to respectful ways of working and understanding that acknowledge the experiences, history and knowledge of Aboriginal and Torres Strait Islander peoples. We actively strengthen relationships between Indigenous and non-Indigenous peoples for the benefit of all Australians and the communities in which RMIT operates.

For more information, visit rmit.edu.au/about



University of South Australia



Vice-Chancellor and President

Professor David Lloyd CCHEM,
FRSC, FTSE, PhD, MA,
BSc(Hons)
08 8302 0500
david.lloyd@unisa.edu.au

Chancellor

Pauline Carr FCG(CS,CGP),
FGIA, FAICD, MBA, BEc

Contact details

GPO Box 2471
Adelaide SA 5001
08 8302 6611

Website

unisa.edu.au

Campus locations

- City East
- City West
- Magill
- Mawson Lakes
- Whyalla
- Mount Gambier

The University of South Australia (UniSA) is a place for unstoppable people. We’re one of the world’s best young universities, recognised internationally for educational excellence, industry engagement and a strong commitment to social equity.

UniSA is South Australia’s leading university for student satisfaction, teaching quality and graduate skills – and we are Australia’s number one university for graduate employability. We’re preparing tomorrow’s professionals today, through degrees that are designed in partnership with industry, combining innovative teaching, real-world experience, and modern, flexible study options.

We offer programs across in-demand, emerging areas, such as allied health, education technology, digital business, space and defence, visual effects, and creative industries. Our curriculum provides students with the skills they need to grasp the opportunities of today – and ensures they have the ingenuity and resilience they need to meet the challenges of tomorrow.

The experiences and knowledge that we provide our graduates draw from our collaborations with more than 2500 companies worldwide. Our researchers partner with end-users to shape the questions we ask, producing world-class research with real impact and social relevance.

And we extend that spirit of collaboration and engagement to the wider community – our mission is to make knowledge accessible to everyone. UniSA is home to Australia’s first future-oriented museum, MOD., one of the nation’s leading art galleries, the Samstag Museum of Art, and the nationally renowned public outreach institution, the Bob Hawke Prime Ministerial Centre.

UniSA is committed to building a better future. We are Australia’s University of Enterprise.



Vice-Chancellor and President

Professor Tyrone Carlin
02 6620 3703
ovc@scu.edu.au

Chancellor
Ms Sandra McPhee AM

Contact details
Military Road
Lismore NSW 2480
02 6620 3000

Website
scu.edu.au

Campus locations

- Lismore
- Coffs Harbour
- Gold Coast

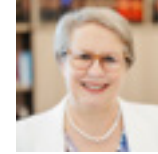
At Southern Cross University, we are driven by a clear purpose: to change lives through revolutionary learning and research with real impact.

Our game-changing Southern Cross Model is focused on deeper, more immersive learning and increased student success. The Model is an integral part of our diverse academic portfolio, with courses in Business, Creative Arts, Education, Engineering, Health, Humanities, Indigenous Knowledge, Information Technology, Law, Science, Social Work and Tourism.

The University has outstanding facilities located in stunning natural environments. Established in 1994, Southern Cross University now boasts three main campuses in the Northern Rivers, at the Gold Coast and in Coffs Harbour where the University's National Marine Science Centre is also located.

A unique partnership with Mulpha Australia enables study at The Hotel School in Sydney, Melbourne, Brisbane and on Hayman Island. Branch campuses also operate in Sydney, Melbourne and Perth in partnership with EduCo, and at the Coomera Creative Campus in partnership with TAFE Queensland. Our graduates number more than 75,000 people who live and work in more than 100 locations around the world.

We were the first university in Australia to introduce a degree in tourism and a Naturopathy Clinic on campus. We continue to break new ground with world-leading research activity in fields like coral reproduction, biogeochemistry and agriculture, producing knowledge that has an impact not just in the regions where the University is located, but all over the world. Together, we are Transforming Tomorrow.



Vice-Chancellor
Professor
Geraldine Mackenzie
07 4631 2168
vc@unisq.edu.au

Chancellor
Mr John Dornbusch

Contact details
West Street
Toowoomba QLD 4350
07 4631 2100

Website
unisq.edu.au

Campus locations

- Toowoomba
- Springfield
- Ipswich

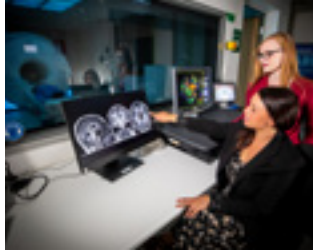
The University of Southern Queensland is where students, researchers, community, and partners access excellence. We are home to some of the most vibrant hubs of education and research

innovation in the world. We have led the nation as the number one university for graduate starting salary for three years running (Graduate Outcomes Survey). At UniSQ, we offer a supportive environment and student-focused commitment to learning and teaching, providing education worldwide from – Toowoomba, Springfield and Ipswich – with an extensive online presence.

By offering a mix of open and flexible programs in business, education, law, arts, health, engineering, surveying, agriculture, and sciences (including paramedicine and aviation), UniSQ meets the educational needs of students, industries, and communities all over the world. Our research is a catalyst for industry growth, community prosperity and wellbeing through focused, high-quality research and research training. Researchers work directly with local communities, industry, and international partners to form strong and enduring partnerships that deliver tangible benefits and real impact.

World-class research institutes, centres, and faculties are home to unique state-of-the-art facilities – like the Mount Kent Observatory, Queensland's only professional astronomical research facility – which enable our researchers to deliver a broad range of research outcomes across multiple disciplines. Our research services industry needs in the University's flagship areas of space and defence, agriculture, health, and regional development.

At the University of Southern Queensland, we are committed to solving problems that matter, developing local solutions to global challenges. UniSQ researchers lead the way in next-generation innovation to inspire our future-focused students.



**Vice-Chancellor
and President**

Professor Helen Bartlett
07 5430 1101
vcp@usc.edu.au

Chancellor

Sir Angus Houston
AK, AFC (Ret'd)

Contact details

90 Sippy Downs Drive
Sippy Downs QLD 4556
07 5430 1234
information@usc.edu.au

Website

usc.edu.au

Campus locations

- Sunshine Coast
- Moreton Bay
- Fraser Coast
- Gympie
- Caboolture

The University of the Sunshine Coast (UniSC) is a young, ambitious university driven by the belief that community and culture is just as important as a world-class education.

We're not the biggest university, but we're growing every day, and doing big things that pave the way for a better tomorrow. Like pushing the boundaries of research, championing sustainability, and producing gold-winning athletes and award-winning alumni.

We've grown exponentially since 1996 into a comprehensive university that is a global leader in sustainability, with award-winning facilities spanning five campuses along the South East coast of Queensland.

Our regional footprint allows us to remove barriers to education for thousands of first-in-family and mature age students. At UniSC, our students are supported to succeed. We are the top ranked public university in Queensland for overall educational experience, and the best in Australia for postgraduate skills development. Underpinning this is excellent teaching and industry connections. We have a five-star rating for teaching and our students graduate work-ready through hands-on learning across the more than 150 programs.

We're the world's only university operating within three UNESCO Biosphere Reserves and a UNESCO World Heritage Site, which grants us a unique opportunity to capitalise on the wealth of significant environmental treasures around us, and continuously work to champion sustainability.

In the 2023 Times Higher Education (THE) Impact Rankings, UniSC is the top ranked Queensland university, and in the top two per cent globally, for 'Overall Impact.'

We're focused on becoming Australia's premier regional university, tackling some of today's most pressing issues through research that focusses on ensuring healthier people, and a healthier planet.

We're bringing about real impact and positive change through learning, teaching and research that helps move everyone forward.

At UniSC, we don't just look towards tomorrow. We lead the way to creating a better tomorrow.



**Vice-Chancellor
and President**

Professor Pascale Quester
03 9214 8163
vc@swin.edu.au

Chancellor

Mr John Pollaers OAM

Contact details

John Street
Hawthorn VIC 3122
03 9214 8000

Website

swinburne.edu.au

Campus locations

- Hawthorn
- Croydon
- Wantirna
- Sarawak, Malaysia

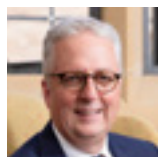
Swinburne University of Technology is a dual-sector institution, defined and inspired by technology and innovation, and renowned for strong industry and community engagement. With a vision of people and technology working together to build a better world, our people are driven by a shared purpose: to create tomorrow's technology and the human capital and talent required for a digital, tech-rich future.

We are building Swinburne as the prototype of a new and different university – one that is truly of technology, innovation and entrepreneurship. Our researchers are collaborating with industry, communities and government to co-create the technology solutions our world needs.

Swinburne is ranked in the top 250 of universities worldwide, as well as in the top 50 young universities under 50 years old in prestigious global rankings.

We have an esteemed reputation for world-leading research in astronomy, physics, engineering, materials science, computer science and information technology, design and innovation, health sciences, neurosciences and mental health.

As part of our Horizon 2025 strategic plan, we are injecting significant research investment into six flagship areas: Space and Aerospace Technology; Innovative Planet – smart sustainability solutions; Medical Technology; Innovative Society; Digital Capability; and Manufacturing Futures. In Australia, Swinburne has three Melbourne campuses offering tertiary education for Higher Education and Vocational Education and Training. Our Sydney campus offers postgraduate courses in information technology as well as construction and infrastructure management. Internationally, Swinburne has a campus in Sarawak, Malaysia, and a number of international locations. Swinburne is also a leader in online learning through Swinburne Online.



Vice-Chancellor and President

Professor Mark Scott AO
02 9351 6980
vice.chancellor@sydney.edu.au

Chancellor

Belinda Hutchinson AC

Contact details

Sydney NSW 2006
1800 SYD UNI
(1800 793 864)

Website

sydney.edu.au

Campus locations

- Camperdown/Darlington
- Camden
- Surry Hills
- Mallett Street
- Westmead
- Sydney Medical School campuses and teaching hospitals
- Sydney CBD
- Sydney Conservatorium of Music
- One Tree Island Research Station

As Australia's first university, the University of Sydney has a proud history of global leadership in education and research, inspiring people from all backgrounds to contribute to positive real-world

change. Our rankings reflect our sustained record of excellence and global reputation – ranked 19th globally in the 2023 QS World University Rankings.

We offer a range of disciplines – more than 500 areas of study – and our community includes more than 69,000 students, 8,400 permanent and fixed-term staff and over 430,000 alumni in more than 170 countries. We engage with partners across all industries and government to answer the biggest questions facing society, business and our communities worldwide.

Reimagining education

Our undergraduate curriculum allows students to choose their way to learn, gain hands-on experience and be workplace-ready. Our postgraduate courses enable students to advance their careers, pursue a passion and gain a higher qualification.

Student experience

We offer our students opportunities for enriched social interactions through more than 200 clubs and societies. Students benefit from access to sporting and performance facilities, museums, galleries and study spaces.

Research with impact

Our research is driven by a desire to make a positive impact. We find solutions to the world's biggest problems by questioning assumptions and thinking differently.

Our researchers combine expertise from many disciplines. We've invested heavily in interdisciplinary research, in areas including obesity, diabetes and cardiovascular disease; inequality; nanoscience; mental health and brain science, and deepening understanding of Southeast Asia and China. We're a world renowned research institution, with 100% of our research ranked at world standard or above by the Australian Government's Excellence in Research for Australia report.



Vice-Chancellor and President

Professor Rufus Black
03 6226 2002
vice.chancellor@utas.edu.au

Chancellor

Alison Watkins AM

Contact details

Churchill Avenue
Sandy Bay TAS 7005
03 6226 2999

Website

utas.edu.au

Campus locations

- Hobart
- Cradle Coast
- Launceston
- Sydney

A university for Tasmania, from Tasmania.

Our mission is to improve the lives of Tasmanians and care for our island home. But we also look outward to help meet the world's challenges from our unique vantage point here in Tasmania.

The Aboriginal people of lutruwita/Tasmania stewarded the island sustainably for tens of thousands of years and we seek to build a future together with them. Our aim is to see Tasmania become a model for a more sustainable world.

Our difference

Home to both pristine wilderness and vibrant cities, Tasmania is a very special place. Our island informs our teaching, our research, and our unique ways of thinking. We have a distinctive culture that produces thinkers, writers, artists, and musicians, whose influence is felt around the globe.

Our location also gives us unique research strengths with access to extraordinary wilderness on land, at sea and in the Antarctic, and with some of the finest agricultural land and most diverse geologies in the world. With a proud maritime heritage, we continue to train the nation's seafarers and design the next generation of vessels for above and below the seas. Having an unrivalled vantage of the Southern skies, we do unique work in astronomy and astrophysics.

Our students

At the University of Tasmania, we commit to making our students more than a number, and the island our campus. Through our dedicated teaching staff and class sizes, everyone gets the support they need to thrive. We also offer scholarships and pathways to nurture each individual learning journey.



Vice-Chancellor and President

Professor Andrew Parfitt
02 9514 1333
andrew.parfitt@uts.edu.au

Chancellor

Ms Catherine Livingstone AO

Contact details

15 Broadway
Ultimo NSW 2007
02 9514 2000

Website

uts.edu.au

Campus locations

- Sydney CBD

The University of Technology Sydney (UTS) is a vibrant young global university located in a vibrant young global city. It's distinctiveness lies at the intersection of technology, creativity and innovation.

The university is considered among the top universities in the world by both the QS (90th) and Times Higher Education (148th) global rankings.

UTS is widely known for its innovative learning and teaching approach, which integrates the best of online and face-to-face experiences. Students benefit from an immersive career-focused education, coupled with strong links to industry. They're prepared for tomorrow, in a way which is relevant today.

The university's inner-city campus has recently been transformed through a \$1.5 billion investment, which has delivered four awardwinning buildings, including internationally-renowned architect Frank Gehry's first Australian venture.

Imbued with collaborative spaces and technological capabilities, the distinctive campus is a physical embodiment of UTS' progressive traits.

UTS research spans a range of disciplines, including health, data sciences, sustainability, applied economics, social futures, robotics, civil engineering, future work, microbiology, and quantum computation. One hundred per cent of UTS' broad fields of research are benchmarked by the Australian Government at world standard or above, while almost 80 per cent of UTS research is assessed at having a 'high' impact beyond the academic – the highest proportion in the country.

Above all, UTS believes in the value of real-world experience and innovation for its students, and making a positive impact on the world around it.



Vice-Chancellor and President

Professor Adam Shoemaker
03 9919 4011
vice-chancellor@vu.edu.au

Chancellor

The Hon Steve Bracks AC

Contact details

Ballarat Road
Footscray, VIC 3011
03 9919 4000

Website

vu.edu.au

Campus locations

- City Campus
- Footscray Nicholson
- Footscray Park
- St Albans
- Sunshine
- Werribee
- Sydney
- Brisbane
- Online

Victoria University (VU) has championed a culture of equity and excellence in education, training, research, and engagement for more than a century.

VU is ranked in the top two per cent of universities in the Times Higher Education (THE) World University Rankings 2024 and top six per cent in the THE Impact Rankings 2022.

Doing dual differently

In 2018, VU introduced the revolutionary VU Block Model of teaching and learning – an Australian first. This model allows students to focus on one subject at a time over four weeks, providing personalised learning in smaller classes. Results show significantly improved pass rates and grades.

As one of only six Australian universities to offer both TAFE and Higher Education, we are uniquely positioned to offer flexible, concurrent and complementary studies – bringing together a range of offerings.

Research with impact

VU researchers have an unyielding focus on real-world research, generating positive solutions for people, place and planet. Done in partnership and collaboration, VU's strengths lie in sport, health and active living, and sustainable industries and liveable cities.

Industry-leading partners

Ethical partnering is at the core of what VU does. Strong alliances with regional organisations like Western Health and the Western Bulldogs and more than 4,000 partnerships provide industry-immersed learning experiences and research collaboration to benefit local communities.

A place of opportunity and diversity

VU is a place where aspirations are realised, enabling students around the world to start well and finish brilliantly. Over 40,000 students from over 90 countries study onshore at VU's eight campuses and 5,400 study at the University's international partner institutions.

Proudly, 51 per cent of students are first-generation – at VU, education comes with opportunity and success.



Vice-Chancellor

Professor
Amit Chakma
08 6488 2801
vice-chancellor@uwa.edu.au

Chancellor

The Hon Robert French AC

Contact details

35 Stirling Highway
Perth WA 6009
08 6488 6000

Website

uwa.edu.au

Campus locations

- Crawley
- Nedlands
- Claremont
- Albany

Since 1911, The University of Western Australia (UWA) has blazed a trail in producing remarkable and life-changing contributions across learning, teaching and research.

Our industry connections, innovative courses, commitment to student experience and high-impact research place UWA as the only World Top 100 university (QS 2024) in WA.

On the banks of the Swan River and the land of the Whadjuk Noongar, our main Crawley campus is home to over 28,000 students with almost 8,000 international students from 117 countries.

The workforce of the future

Ranked first in WA for graduate employability (QS Graduate Employability Ranking 2024), UWA produces highly employable graduates who forge long and successful careers. Working with industry partners on real challenges, and taking on networking opportunities, work placements and internships, our students gain the skills, knowledge and connections to kick-start their career.

World-class research

Our researchers partner with industry and communities to tackle some of the world’s most complex problems. We have key strengths in mining engineering, marine and ocean engineering, environmental science, biological science and agricultural science. As a member of the Group of Eight and the Matariki Network of Universities, UWA is globally recognised as a leading research-intensive university, contributing to the world’s intellectual, cultural and economic development.

Serving our community

Creating, applying and sharing knowledge to make a positive impact is at the heart of what we do at UWA. Our vibrant campus is an arts and culture hub, and through our students, research and partnerships with sporting, business, arts and charity organisations, we’re improving the lives of those in our communities.

WESTERN SYDNEY UNIVERSITY



Vice-Chancellor and President

Professor Barney Glover AO
02 9683 8121
b.glover@westernsydney.edu.au

Chancellor

Professor Jennifer Westacott AO

Contact details

Locked Bag 1797
Penrith NSW 2751
02 9852 5222

Website

westernsydney.edu.au

Campus locations

- Bankstown City
- Campbelltown
- Fairfield (Opening early 2024)
- Hawkesbury
- Liverpool City
- Lithgow
- Melbourne
- Nirimba
- Parramatta & Parramatta City Campus Precinct
- Penrith
- Surabaya (Opening Sep 2024)
- Sydney City
- Sydney Olympic Park
- Vietnam
- Westmead

Western Sydney University is student-focused and research-led, located in Australia’s fastest growing, most economically significant region – Greater Western Sydney.

With campuses throughout Australia’s global city as well as internationally, we have more than 50,000 students and a cohort, both locally and globally, of more than 200,000 alumni.

Ranked number one in the world, two years in a row

We are delighted to be ranked the world’s best in the 2022 and 2023 Times Higher Education (THE) Impact Rankings.

In 2023, Western Sydney University topped the list out of more than 1,700 institutions for our work tackling issues like sustainability, climate action, equality, inclusivity and social justice.

More than 85 per cent of our research is also rated ‘World standard or above’ in the Excellence in Research for Australia (ERA) evaluation.

Future focused teaching and learning

We ensure our students – 65 per cent of whom are the first in their family to attend university – enjoy the best learning experience possible.

We put students at the heart of everything we do. Our innovative teaching and learning brings students, staff and external partners together to co-create courses that prepare students for employment success in the 21st century.

Community

Our Western Growth strategy is co-creating transformative educational infrastructure in partnership with industry, government and higher education providers.

With world-class vertical campuses in Western Sydney growth centres – Parramatta, Westmead, Liverpool and Bankstown CBD – we will soon open ‘Fairfield Connect’. A large state of the art, high tech study and support hub in the heart of Fairfield. These campuses offer technology-rich teaching and research spaces, collaboration with industry, and embed the university in the economic and civic life of the Western Sydney region.



UNIVERSITY
OF WOLLONGONG
AUSTRALIA



**Vice-Chancellor
and President**

Professor Patricia M.
Davidson PhD, MEd, RN,
FAAN
02 4221 3909
vc-office@uow.edu.au

Chancellor

Ms Christine McLoughlin AM

Contact details

Northfields Avenue
Wollongong NSW 2522
02 4221 3555

Website

uow.edu.au

Campus locations

- Wollongong
- Innovation Campus
- Batemans Bay
- Bega
- Shoalhaven
- South Western Sydney
(Liverpool)
- Southern Highlands
- Southern Sydney
(Loftus, Sutherland Shire)
- Sydney (CBD)
- Dubai
- Hong Kong
- Malaysia

At the University of Wollongong (UOW), we're proud to be among the best modern universities in the world. We're ranked in the world's top 200 universities and equal 61st in the world for economic impact in the global THE Impact rankings, which benchmarks universities against the United Nations Sustainable Development Goals.

Our graduates are mobile, technologically literate, and rank 2nd in NSW for overall employer satisfaction, as highlighted in the QILT Employer Satisfaction Survey 2022.

Our vision is to inspire a better future through education, research and partnership. Three goals drive us towards our purpose; empowering students for their future, creating knowledge for a better world and making a difference for our communities.

UOW has a strong international focus and reputation, delivering world-class teaching to approximately 7,000 students globally, including at our campuses in the United Arab Emirates, Hong Kong and Malaysia, and teaching locations in China, Singapore and soon to be, India.

UOW in Dubai opened its the doors to a new, 200,000 square-foot 'campus of the future' in Dubai's Knowledge Park in 2022 and celebrated 30 years since establishment in 2023. In 2024 UOW India in GIFT City, Gandhinagar will be home to 1,000 Indian students.

UOW's newest research facility, Molecular Horizons, is at the forefront of scientific discovery, unlocking the innermost secrets of the living cell and developing new ways to detect and attack disease. Molecular Horizons is dedicated to illuminating how life works at a molecular level and solving some of the world's biggest health challenges.

Universities Australia
1 Geils Court, Deakin ACT 2600
+61 2 6285 8100
contact@universitiesaustralia.edu.au
universitiesaustralia.edu.au



UNIVERSITIES
AUSTRALIA