

UNIVERSITIES AUSTRALIA

# UNIVERSITY PROFILES

2021



UNIVERSITIES  
AUSTRALIA

This work is licensed under a Creative Commons Attribution 4.0 International Licence.

**Further inquiries should be made to the Chief Executive.**

1 Geils Court, Canberra ACT 2601  
**P** +61 (0)2 6285 8100  
**E** [contact@universitiesaustralia.edu.au](mailto:contact@universitiesaustralia.edu.au)

**[universitiesaustralia.edu.au](http://universitiesaustralia.edu.au)**

ABN 53 008 502 930

## FOREWORD

Universities are places of great inspiration and initiative. They are where we forge our understanding of ourselves and the world around us – and our place in a forward-looking nation.

Our universities educated more Australian students than ever before in 2019 – over one million Australian and 450,00 international students. Almost 340,000 students graduated that same year.

Our universities offer courses in natural and physical sciences, information technology, engineering, architecture and building, agriculture and environmental studies, health, education, management and commerce, society and culture, creative arts and food hospitality and personal services.

Universities are constantly adding new disciplines of study that reflect changes in industry, society and workplaces. Through them, they seek to prepare students for jobs that do not yet exist.

Australia relies on our world-class university research to find solutions to the biggest challenges and to grasp the most promising opportunities. University expertise, ingenuity and innovation help to develop new industries and new jobs that will shape Australia's future.

Through collaborations with business, university researchers help them solve their toughest problems and bring their ideas to fruition.

Through this research, education and community engagement, universities improve the lives of individuals, families, communities, and the nation.

Thirty-nine outstanding universities are members of Universities Australia and this, the 2021 edition of *University Profiles*, is your guide to all of them.

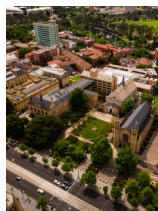
We commend it to you.

**Professor John Dewar AO and Ms Catriona Jackson**  
**Chair and Chief Executive**  
**Universities Australia**





# THE UNIVERSITY of ADELAIDE



## Vice-Chancellor and President

Professor Peter Høj AC  
P 08 8313 5120  
[vice-chancellor@adelaide.edu.au](mailto:vice-chancellor@adelaide.edu.au)

## Chancellor

The Hon Catherine Branson AC QC

## Chief Marketing Officer

Dr Benjamin Grindlay  
P 08 8313 4699  
[benjamin.grindlay@adelaide.edu.au](mailto:benjamin.grindlay@adelaide.edu.au)

## Contact Details

The University of Adelaide  
SA 5005  
P 08 8313 4455

## Website

[adelaide.edu.au](http://adelaide.edu.au)

## Campus Locations

North Terrace  
Roseworthy  
Waite

The University of Adelaide stands tall on the world stage as South Australia's leading university. Consistently ranked in the top 1 per cent of universities globally\* and located in the heart of the world's 10th most liveable city\*\*, we offer the rare combination of elite academic performance and outstanding quality of life.

We also combine significant, impact-focused research with excellent graduate outcomes. We're the state's only member of Australia's prestigious Group of Eight research-intensive universities, and rank number one for graduate employability<sup>^</sup>.

Established in 1874, our proud tradition instils confidence in our students. We're associated with five Nobel Laureates, more than 120 Fulbright Scholars and over 100 Rhodes Scholars. Yet as a progressive, forward-thinking institution, our focus remains firmly on breaking new ground.

## Research for a better world

Our 1,700 research academics and 2,300 research students collaborate with industry, government and other leading institutions to solve real societal problems and achieve meaningful community impact.

One hundred per cent of our research is rated 'world standard or above', with work in 41 fields assessed as 'well above world standard'<sup>†</sup>. Key strengths include: agriculture, food and wine; defence and security; med-tech and health; environment and sustainability; mining and energy; and society, culture and the economy.

## Preparing students for the future workforce

Although many jobs students could be doing in a decade's time don't yet exist, the best preparation for them does, here at Adelaide. We constantly update our degrees to ensure that—wherever students' passions lie—they'll gain the flexible capabilities to explore every future opportunity. Importantly, the quality of our degrees opens career paths everywhere. We're ranked top 10 globally in two subject areas; top 50 in another nine; and top 100 in 14 more.<sup>#</sup>

## A uniquely rewarding workplace

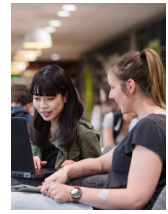
The University of Adelaide offers vast scope for a long, fulfilling career. Our staff work alongside world-leading colleagues; receive career-long support, with ongoing opportunities for personal and professional growth; and are immersed in incredible cultural diversity. Around 30 per cent of our 28,000 students come from overseas—more than 100 countries in all—and half of our academic staff were born internationally or hold dual citizenships.

\*Times Higher Education, 2020; QS World University Rankings, 2020; Academic Ranking of World Universities, 2019.

\*\*Economist Intelligence Unit, 2019. <sup>^</sup>QS Graduate Employability Ranking, 2020.

<sup>†</sup>Excellence in Research Australia, 2018.

<sup>#</sup>QS World University Rankings By Subject, and Academic Ranking of World Universities by Subject, both 2020.



### Vice-Chancellor and President

Professor Zlatko Skrbis  
P 02 9739 2930  
zlatko.skrbis@acu.edu.au

### Chancellor

The Hon John Fahey AC

### Director – Marketing and External Relations

Ms Kathy Vozella  
P 02 9739 2799  
kathy.vozella@acu.edu.au

### Contact Details

40 Edward Street  
North Sydney NSW 2060  
P 02 9739 2368

### Website

acu.edu.au

### Campus Locations

Adelaide  
Ballarat  
Blacktown  
Brisbane  
Canberra  
Melbourne  
North Sydney  
Strathfield  
Rome

An ACU education builds on the Catholic understanding of faith and reason working together in pursuit of knowledge and promotion of human dignity and the common good.

An ACU education seeks to transform lives and communities. Students are challenged to look beyond the classroom, solve real world problems, develop their own search for meaning, and cultivate strong professional ethics. They are invited to stand up for people in need and causes that matter.

ACU is open to all. As is common with great Catholic institutions the world over, the university is inclusive and supportive of everyone, every day – regardless of their faith or tradition.

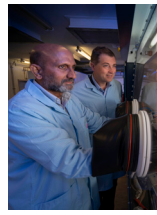
ACU is a young university making a serious impact. Ranked in the top two per cent of universities worldwide\* and in the top 10 Catholic universities\*\*, ACU is also first in Australia for graduate employment\*\*\*. The university has eight campuses around Australia and a campus in Rome, Italy.

Opportunities for personal and professional growth are critical to ACU. This is a university of service, so much so that it is built into the curricula. All ACU courses offer work placements, internships, or volunteering opportunities.

\* Times Higher Education World University Rankings 2021. Percentage calculated as ACU's world rank as a proportion of the total number of universities in the world: International Handbook of Universities 2019, Palgrave MacMillan.

\*\* International Federation of Catholic Universities members ranked on Times Higher Education World University Rankings 2021

\*\*\* Graduate Outcomes Survey – Longitudinal 2020, full-time employment



### Vice-Chancellor

Professor Brian Schmidt AC  
P 02 6125 2510 | F 02 6257 3292  
vc@anu.edu.au

### Chancellor

The Hon Julie Bishop

### Strategic Communications and Public Affairs

P 02 6125 4144  
scapa@anu.edu.au

### Contact Details

Canberra ACT 2601  
P 02 6125 5111 | F 02 6125 5571  
enquiries@anu.edu.au

### Website

anu.edu.au

### Campus Locations

Main Campus (Acton)  
Canberra Hospital, Clinical School  
Kiloea Coastal Campus  
Mt Stromlo Observatory  
North Australia Research Unit  
Siding Spring Observatory

The Australian National University (ANU) is unlike any other university in Australia.

Founded in 1946, in a spirit of post-war optimism, our role was to help realise Australia's potential as the world recovered from a global crisis.

That vision, to support the development of national unity and identity, improve our understanding of ourselves and our neighbours, and provide our nation with research capacity amongst the best in the world, and education in areas vital for our future, has been our mission ever since.

Today, we work not only to ensure our national prosperity, but to help Australia to tackle the complex challenges facing humanity, like the climate crisis and global pandemics.

We are trusted by Australia to lead. We lead with foresight and a commitment to making our world a better place, as a diverse and dynamic community that inspires minds and different perspectives.

ANU has a responsibility, as the national university, to be a university that Australia trusts. This means we are a community that is inclusive and open to all people who have the talent and passion to succeed, regardless of their background. Our campus is one that seeks to reflect our nation and our region.

We connect these talented minds by fostering a sense of community on our beautiful bush campus in the heart of our nation's Capital. Our campus is a meeting place for our community to converge and collaborate, as First Nations people have done on these lands for thousands of years.

Connections are important to us – be they to people or to country. We connect both locally, where our ties to the Australian Government and policy makers enable our researchers to help shape national policy, and on the international stage, where our trusted experts act as a conduit for Australian contribution to the global community.

It can be difficult work, but it's work we proudly do – because connecting talented people with diverse perspectives, equipping and encouraging them to address the most complex of tomorrow's problems, and ensuring Australia's future is not just our approach – it's also our national role and international responsibility as Australia's national university, and it's a responsibility from which we'll never waiver.



### **Vice Chancellor and President**

Professor Tim Brailsford  
P 07 5595 1473  
vc@bond.edu.au

### **Chancellor**

The Hon Dr Annabelle Bennett  
AC SC

### **Strategic Communications Advisor**

Ms Catherine Webber  
P 07 5595 5539  
cwebber@bond.edu.au

### **Media Team**

P 07 5595 1376 | M 0420 927 941  
media@bond.edu.au

### **Contact Details**

University Drive  
Robina QLD 4226  
P 07 5595 1111  
information@bond.edu.au

### **Website**

[bond.edu.au](http://bond.edu.au)

### **Campus Location**

Gold Coast

Bond University is Australia's leading independent, not-for-profit university, dedicated to creating and supporting the next generation of corporate and community leaders.

Bond students are offered a personalised educational experience of the highest standard, taught in small classes where the professors know students by name and understand their ambitions. Access to mentoring by world-renowned academics, and lectures taught by high-profile industry achievers are accompanied by a core skills program which teaches leadership, critical thinking, and communication skills.

### **Ranked number one in Australia**

Bond's commitment to delivering personalised learning and well-rounded graduates has seen the Good Universities Guide rank Bond as No.1 for student experience, 15 years in a row. Bond's student-to-teacher ratio of 10:1 was also recognised by the latest results, ranked the best in Australia. At undergraduate level, Bond was judged best in Australia in three categories: student support, learning resources, and learner engagement. At postgraduate level, Bond led the nation in skills development and student support.

Since opening in 1989, Bond has pioneered the three-semester-per-year system, so its graduates are beginning their careers and earning an income earlier. Future employability is a key focus at Bond, with the university's approach already standing out: the Federal Government's 2018 and 2019 Employer Satisfaction Survey ranked Bond as Australia's top university for producing graduates employers want to hire.

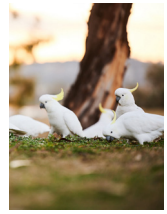
### **Employable, future-focused graduates**

Bond University's strong focus on employability also includes guidance through its Career Development Centre, the Beyond Bond professional development program, and its co-curricular entrepreneurship program Transformer.

In 2019, Bond launched a collection of revolutionary new Transformation Degrees in Digital, Health, Law, and Entrepreneurship. The degrees are focused on new and emerging careers that aim to produce critical, diverse, and innovative thinkers who are prepared to take on global challenges, by teaching them design thinking, information analysis, problem-solving and change management.

As the only accredited university in Queensland offering Bachelor and Masters programs in actuarial science, Bond students benefit from practical experience and expert industry knowledge in big data – a high-growth industry.

Key study areas: actuarial science; architecture and built environment; business and commerce; communication and creative media; health sciences; hotel/tourism; international relations and humanities; law; medicine; social sciences; psychology and counselling; sport.



### **Vice-Chancellor and President**

Professor Paddy Nixon  
P 02 6201 5000  
ovc@canberra.edu.au

### **Chancellor**

Professor Tom Calma AO

### **Associate Director Media and Communications**

Ms Megan Reeder Hope  
P 0408 826 362  
ucmedia@canberra.edu.au

### **Contact Details**

University of Canberra  
Bruce ACT 2601  
P 02 6201 5111 | F 02 6201 5999

### **Website**

canberra.edu.au

### **Campus Location**

Canberra  
Sydney  
Melbourne  
Queensland  
Hong Kong  
China  
Bhutan

The University of Canberra is a young, dynamic, professionally oriented university with a clear public purpose serving the people and communities of Canberra and the surrounding regions – city to coast, alpine to tablelands. Our location in Australia's capital city, surrounded by dynamic areas of regional Australia, defines who we are and the unique offerings we take to the world. While our home is Canberra, our reach is global.

The University of Canberra is ingrained in the very fabric of what makes Canberra great. In 2020, the University of Canberra celebrated our 30th year as a university. We've achieved many great things over the past 30 years – including rising in world rankings, uncovering breakthrough research, opening world-class learning, teaching, and sporting facilities, and expanding our academic offerings.

We are a young university with fierce ambition. Our continued success in research and education has been internationally recognised, resulting in UC becoming the world's fastest rising university in the nation and one of the fastest rising in the world (QS, 2019). UC has been named in the top one per cent of universities globally, placed in the 184th position of the Times Higher Education World University Rankings 2021.

Our graduates enjoy an 89 per cent employment rate and higher starting salaries than the Australian university average, and many of our 86,000 alumni hold influential positions in public and private sectors around the world.

The University of Canberra is leading the way to become the go-to university for Aboriginal and Torres Strait Islander students and staff. In 2021, we will release our fourth Reconciliation Action Plan (RAP), following on from the achievements and goals outlined in the 2018-2020 RAP.

We are a leading sports institution and have strong ties with elite sporting teams. We proudly own the Women's National Basketball League team the University of Canberra Capitals, and our women's rugby sevens squad competes in the Uni 7s Series. We support W-League team Canberra United and the Brumbies Super Rugby team call our campus home.

Through a transformative campus development plan, the university will continue to evolve into an interactive, connected hub of scholars, learners and innovators.





### Vice-Chancellor and President

Professor Nick Klomp  
P 07 4930 9752  
vc-cquniversity@cqu.edu.au

### Chancellor

Mr John Abbott AM

### Manager, Corporate Communications

Ms Jocelyn Sticklen  
P 07 4150 7142  
M 0418 212 763  
j.sticklen@cqu.edu.au

### Contact Details

CQUniversity Australia  
554-700 Yaamba Road  
Norman Gardens QLD 4701  
P 07 4930 9777 | F 07 4930 9399  
communicate@cqu.edu.au

### Website

cqu.edu.au

### Campus Locations

Adelaide	Brisbane
Bundaberg	Cairns
Gladstone	Emerald
Mackay	Melbourne
Noosa	Perth
Rockhampton	Sydney
Townsville	

Originally founded in Rockhampton in 1967, as the Queensland Institute of Technology (QIT) Capricornia, CQUniversity Australia was granted full university status in 1992 and now has more than 30,000 students studying online and on-campus across Australia.

CQUniversity is proud to be recognised as Australia's most inclusive university with some of the highest ratios of students from disadvantaged, mature age, Aboriginal and Torres Strait Islander, and first-in-family backgrounds. It is this strong focus on participation and accessibility, that has seen CQUniversity firmly establish itself as one of the largest universities based in regional Australia, and the only university with a campus in every mainland state of Australia.

CQUniversity is Queensland's only dual sector university and delivers more than 300 education and training offerings, from short courses and certificates, through to undergraduate, postgraduate and research degrees. The university is also a pioneer in the delivery of distance education and continues to be a leader in online study with around one third of the current student cohort made up of students studying off-campus, many of whom are based in rural and remote areas.

After more than half a century working with stakeholders in regional Australia, CQUniversity is now a renowned research institution in several key disciplines and the benchmark leader for how universities should engage and collaborate with communities and industry. The university's applied research focus is oriented towards impact and real-world outcomes, with the purpose of providing solutions to challenges and identifying new opportunities for advancement in our regions and beyond.

CQUniversity's unique vision for diversity, outreach, engagement, research, learning and teaching, and inclusiveness, combined with its growth aspirations and continued expansion of student success, research excellence, social innovation and community engagement, has led to it being recognised within several world university rankings, and among the world's best 'young universities' by both the Times Higher Education and QS World University Rankings.



**Vice-Chancellor and President**

Professor Scott Bowman AO  
P 08 8946 6040  
vc@cdu.edu.au

**Chancellor**

The Hon Paul Henderson AO

**Director, Media and Communications**

Ms Robyn McDougall  
P +61 8 8946 6551  
robyn.mcdougall@cdu.edu.au

**Contact Details**

Ellengowan Drive  
Casuarina NT 0909  
P +61 8 8946 6666  
courses@cdu.edu.au

**Website**

cdu.edu.au

**Campus and Centre Locations**

Casuarina (Darwin)  
Alice Springs  
Palmerston  
Katherine  
CDU Sydney  
CDU Darwin Waterfront  
Jabiru  
Tennant Creek  
Yulara

Charles Darwin University (CDU) brings people together to acquire and use knowledge to shape a better future. With our main campus located in Darwin, the capital of the Northern Territory, CDU is located closer to seven major Asian cities than it is to any Australian capital.

Our geographical location informs much of our research and teaching interests in South-East Asia, Northern Australia and in Indigenous Australia. CDU is a recognised leader in environmental studies (tropical and desert knowledges), Indigenous education and studies, remote nursing and education, South-East Asian studies and online learning.

CDU was the first institution in Australia to achieve the status of a fully fledged dual-sector university, which means that students can undertake vocational education and training as well as higher education, with qualifications ranging from certificates through to doctorates.

More than 22,000 students study at our campuses and learning centres located throughout the Northern Territory and in Sydney. We are a world leader in delivering education to remote communities – including 150 remote Indigenous communities – and offer online courses to enable people to fit studying into their busy lives. About 70 per cent of our higher education students study online.

The university’s six higher education colleges offer a range of disciplines including engineering and information technology, the environment, health and human sciences, nursing and midwifery, psychological and clinical sciences, Indigenous knowledges, business, creative arts and humanities, education and law.

We have achieved national and international recognition for research impact. CDU is also a leader in graduate employment and salary outcomes.

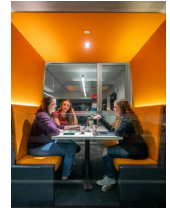
CDU is attracting an increasing number of international students, who come from more than 60 countries. Our vibrant international student community is attracted particularly to the multicultural character of tropical Darwin.

We enjoy strong partnerships with other institutions including the Australian National University, Flinders University and the Batchelor Institute of Indigenous Tertiary Education.

We are committed to social justice, sustainability and collective effort.



**Charles Sturt  
University**



**Vice-Chancellor and President**

Professor John Germov  
P 02 6338 4209  
vc@csu.edu.au

**Chancellor**

Dr Michele Allan

**Contact Details**

Panorama Avenue  
Bathurst NSW 2795  
P 1800 275 278

**Website**

csu.edu.au

**Campus Locations**

Albury-Wodonga  
Bathurst  
Brisbane  
Canberra  
Dubbo  
Goulburn  
Manly  
Melbourne  
Orange  
Parramatta  
Port Macquarie  
Sydney  
Wagga Wagga  
Wangaratta

Charles Sturt University has a proud history of providing courses and graduates that help communities – especially in regional Australia - to grow and flourish.

The university’s strong links to industry connect students with relevant, real-world experience and experts to support learning throughout their courses.

This focus on combining practical knowledge with quality learning and teaching makes Charles Sturt graduates some of the most employable in the country, evidenced by the university’s outstanding results in the 2021 edition of the Good Universities Guide, registering five star ratings for graduate salary (median salary of \$65,000) and full-time employment (87 per cent of undergraduates are in full-time employment within four months of completing their course).

Charles Sturt boasts an outstanding track record of enrolling and graduating students from Indigenous, low socio-economic, and rural and remote backgrounds.

The university offers courses across science, business, justice, behavioural sciences, education and arts, and is proudly achieving world-standard outcomes across a wide range of research fields.

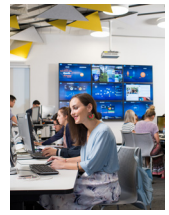
Additionally, in 2021, the university is very proud to welcome its first cohort of students to study the Joint Program in Medicine being offered in partnership with Western Sydney University.

Students have flexibility in how they study with Charles Sturt: on-campus in Albury-Wodonga, Bathurst, Canberra, Dubbo, Goulburn, Orange, Port Macquarie and Wagga Wagga, or at one of Charles Sturt’s study centres in Sydney, Brisbane and Melbourne.

The university also has a strong reputation as Australia’s most experienced online university and the nation’s online university of choice, according to statistics from the Department of Education, Skills and Employment, Higher Education statistics.

At the heart of Charles Sturt’s approach to education is the Wiradjuri phrase yindyamarra winhanganha - ‘the wisdom of respectfully knowing how to live well in a world worth living in’.

Charles Sturt embraces diversity, nurtures individual growth, and values economic, social and environmental sustainability. It is unashamedly a university of the land and people of our regions, one that is genuinely proud of its commitment to producing holistic, far-sighted graduates who help make this a world worth living in.



### Vice-Chancellor

Professor Harlene Hayne  
vc@curtin.edu.au

### Chancellor

Dr Andy Crane

### Director, Strategic Communications

Ann Paterson  
P 08 9266 2792  
a.paterson@curtin.edu.au

### Contact Details

Kent Street  
Bentley WA 6102  
P 08 9266 9266

### Website

curtin.edu.au

### Campus Locations

Perth (Bentley and Perth City)  
Kalgoorlie  
Malaysia  
Singapore  
Dubai  
Mauritius

Curtin University was established in Perth in 1986 and named after former Prime Minister John Curtin, who once said the great university should “look ever forward”.

Since then, Curtin’s footprint has expanded to include campuses in Malaysia, Singapore, Dubai and Mauritius. Its 59,222 students come from around the world and enjoy access to outstanding facilities, high-quality teaching and courses shaped by industry.

### Ranked among the best

In the Academic Ranking of World Universities 2020, Curtin was ranked among the top one per cent of universities worldwide.

For several years, Curtin has ranked second in the world for the discipline of mineral and mining engineering in the QS World University Rankings by Subject, owing largely to the strength of the Curtin-administered Western Australian School of Mines.

Curtin is Western Australia’s most preferred university for undergraduates, holding a market share of 53 per cent of the state’s undergraduate applicants in 2020.

### A global education

Curtin students receive a globally relevant education that encourages them to develop an intercultural awareness, question traditional ideas and take advantage of a variety of exchange opportunities.

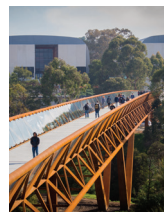
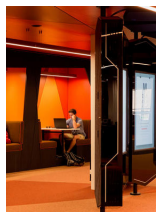
Curtin maintains strong partnerships with some of the world’s most reputable institutions including an alliance with the historic University of Aberdeen in Scotland to leverage the strengths and industry networks of both universities, particularly in energy research.

### Research and development

Curtin’s rapid rise up the international rankings can largely be attributed to its research performance across a range of endeavours. It leads a number of major international research projects and is involved with more than 70 research centres and collaborations, including the Curtin Institute of Radio Astronomy, the Centre for Crop and Disease Management and Innovation Central Perth.

### Learning reinvented

Curtin students can access a range of industry placements and technology-rich learning environments that recreate real workplaces – such as a simulated hospital ward, stock market trading room and digital marketing agency – to gain a competitive edge in the job market.



### Vice-Chancellor

Professor Iain Martin  
P 03 5227 8501  
vc@deakin.edu.au

### Chancellor

Mr John Stanhope AM

### Director – Media and Corporate Communications

Mr Glen Atwell  
P 0428 597 468  
glen.atwell@deakin.edu.au

### Contact Details

Head Office, Geelong Waterfront  
Campus, Locked Bag 20001,  
Geelong, VIC 3220  
P 03 5227 1100

### Website

deakin.edu.au

### Campus Locations

Geelong Waterfront  
Geelong Waurrn Ponds  
Melbourne Burwood  
Warrnambool  
Cloud Campus (online)

Established in 1974, Deakin is one of Australia’s most progressive and agile universities, leading in the innovative use of digital technologies and online learning, and blending this capability across its distinctive campus precincts in Melbourne, Geelong and Warrnambool.

### ‘Balanced excellence’ in education and research

Deakin has achieved a balance of high-quality research with an education experience that is consistently rated as one of the best in the country. For ten consecutive years, Deakin has been rated number one for student satisfaction in Victoria. Deakin is committed to lifelong learning, graduate employment outcomes and providing students with choices about how, when and where learning occurs. Deakin provides opportunity and access for learners at all stages of their lives and careers, working with partners, both locally and internationally, to enable flexible and non-traditional pathways into education.

Deakin’s four faculties offer a comprehensive range of courses across the arts, science, sport, nutrition, architecture, business, law, medicine, optometry, engineering, nursing, psychology and teaching.

Deakin has a thriving research culture known for its multidisciplinary collaborations and consistently places in the top one per cent of universities in the world in the major rankings. The ideas generated form the basis for new and improved products and services that deliver significant social and economic benefits.

### Community, government and industry engagement

Deakin’s collaborations emphasise mutually beneficial partnerships and real-world impact in areas of high national priority, including health and wellbeing, smarter technologies, sustainability, advancing society and culture, and building safe and secure communities.

Deakin’s industry precincts provide an important link between technological innovation and successful industry outcomes. They support collaboration and sustainable job growth, foster entrepreneurship and streamline pathways for commercial research.

### A global university

Deakin is global in its outlook, activities and impact, with partnerships in 57 countries and offices in China, India, Latin America, Europe, Indonesia, Malaysia, Vietnam, Pakistan and Singapore.

These international networks build trade links and promote knowledge exchange, and all students benefit from an increased understanding of other cultures through international study opportunities. Over 275,000 alumni live and work across the globe and their achievements are the best measure of Deakin’s success.



**Vice-Chancellor and President**

Professor Steve Chapman CBE  
 P 08 6304 2205 | F 08 6304 2666  
 vc@ecu.edu.au

**Chancellor**

The Hon Kerry Sanderson AC

**Corporate Relations Manager**

Mr Rhys Stacker  
 P 08 6304 2131  
 r.stacker@ecu.edu.au

**Contact Details**

270 Joondalup Drive  
 Joondalup WA 6027  
 P 08 6304 0000 | F 08 6304 1257

**Website**

ecu.edu.au

**Campus Locations**

Joondalup  
 Mount Lawley  
 South West

Edith Cowan University (ECU) provides the ideal learning environment for people who want to reach their potential.

Located in Western Australia, our industry-relevant teaching and research, supportive study environment and award-winning facilities enable ECU students to do more than just survive in this world – they thrive in it.

Established in 1991, ECU took the opportunity to reshape the way higher education is delivered in a distinctive and inspiring campus environment.

ECU courses are developed in consultation with industry, and teaching staff have extensive industry experience and networks. It's why ECU students can expect placement opportunities, fieldwork, practicums and networking events as part of their studies.

This approach has been rewarded with five-star ratings for teaching quality over the past 14 years, along with consistently high ratings for overall education experience and skills development, as reported in the Good Universities Guide.

ECU's world-class research strives to make a difference both locally and globally. ECU focuses on working with our communities, business and government organisations to solve real-world problems.

The university was named after Edith Dirksey Cowan, the first woman to be elected to an Australian Parliament. Her life was dedicated to the belief that education was the key to growth, change and improvement in society.

Her example informs ECU's values as we pride ourselves on developing capable graduates who lead engaged and productive lives in the communities in which they live and work.

**At a glance**

ECU has more than 30,000 undergraduate and postgraduate students, including international students from more than 100 countries.

Our eight schools collectively deliver more than 300 diverse courses across medical and health sciences, engineering, education, arts and humanities, business and law, nursing and midwifery, science and the Western Australian Academy of Performing Arts.

Courses are offered across three campuses – Joondalup and Mount Lawley in metropolitan Perth and the South West Campus at Bunbury, 200km south of the capital city. ECU also offers a comprehensive suite of online study options.



### **Vice-Chancellor and President**

Professor Duncan Bentley  
P 03 5327 8500  
vc@federation.edu.au

### **Chancellor**

Mr Terry Moran AC

### **Director of Communications**

Mr Greg Meyer  
P 03 5327 6773  
g.meyer@federation.edu.au

### **Contact Details**

University Drive  
Mt Helen VIC 3350  
P 03 5327 9000 | F 03 5327 9704  
info@federation.edu.au

### **Website**

federation.edu.au

### **Campus Locations**

Ballarat  
- Mt Helen  
- SMB – Arts Academy and  
Federation TAFE  
Berwick  
Brisbane  
Gippsland  
Wimmera

As Victoria's premier regional university, we have been educating Australia's future leaders, innovators and thinkers for 150 years.

We have been here for our communities through wars, disasters and times of strong economic growth. We provide the learning, innovation and research they need to survive and succeed.

We are resilient and ready to shape the future. Join us on the journey!

You'll be part of a network of more than 20,000 Federation students, which extends across Victoria – in Ballarat, Berwick, Gippsland and the Wimmera – our campus in Brisbane and partner providers across Australia and overseas. You will be ready to thrive in a digital post-COVID world.

Our purpose is to transform lives and enhance communities. A qualification from Federation University or Federation TAFE does just that.

We support our students to succeed and prepare them for the future. We are rated the number one university in Victoria for full-time employment and our graduates have the highest starting salaries. We are rated the number one university in Victoria for the way we support our students, develop their skills and for the exceptional quality of our teachers.

We are number one in all of Australia for postgraduate teaching quality.

The research conducted at Federation University is world class. Under the Excellence in Research Australia (ERA) rankings we have achieved the highest possible five-out-of-five rating in seven research areas, with a further 11 research areas ranked above or at world standard.

Federation drives regional economic growth and builds our communities.

We work with you to make learning something you can do, whoever you are and wherever you are on your lifelong learning journey. We help you develop the skills you need to follow your passion.

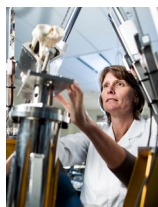
Our graduates thrive, because Federation is deeply engaged with industries and employers. We have the largest regional Technology Park of any university in Australia, giving our students access to invaluable experience in global organisations.

This all ensures that our internationally-connected research collaborations are focused on solving real-world problems and making a difference in people's lives.

We invite you to become part of our history.



**Flinders**  
UNIVERSITY



**President and Vice-Chancellor**

Professor Colin Stirling  
P 08 8201 2101 | F 08 8201 5949  
colin.stirling@flinders.edu.au

**Chancellor**

Mr Stephen Gerlach AM

**Executive Director -  
Communication and  
Engagement**

Ms Callista Thillou  
P 08 8201 3743  
callista.thillou@flinders.edu.au

**Contact Details**

GPO Box 2100  
Adelaide SA 5001  
P 08 8201 3911 | F 08 8201 3000  
admissions@flinders.edu.au

**Website**

flinders.edu.au

**Campus Locations**

Bedford Park (main campus)  
Victoria Square - Adelaide CBD  
Tonsley  
Northern Territory  
Darwin Alice Springs  
Katherine Nhulunbuy  
Regional South Australia  
Lincoln Marine Science Centre  
Riverland  
Greater Green Triangle

Globally focused and locally engaged, Flinders University is making a difference through innovative research, excellence in teaching and learning, and exceptional student experience.

Flinders University is headquartered in South Australia with a footprint that extends through regional and remote Australia.

Ranked in the top two per cent of world universities<sup>1</sup>, we are number one in South Australia for student/teacher ratio, undergraduate starting salary, full time employment for postgraduates, and undergraduate student demand<sup>2</sup>.

In an era of disruptive change, Flinders University is growing its international reputation as a world leader in research, an innovator in contemporary education and a source of enterprising graduates equipped to change the world.

Unique innovation offerings are supported by the Flinders New Venture Institute, a global entrepreneurship leader<sup>3</sup> located at our high-tech Tonsley campus, while our Victoria Square campus provides a study space in the heart of the city. An award-winning student hub at main campus fosters interactive learning in a digitally enabled environment.

With a focus on rural and remote area education through our Northern Territory Medical Program, we support students to complete a Flinders Doctor of Medicine in Darwin through facilities in Alice Springs, Katherine and Nhulunbuy. Rural medical, nursing, and allied health courses delivered at our regional centres are identical in structure to those in Adelaide.

Internationally, we deliver joint courses with leading universities in China, Hong Kong, Malaysia, Singapore, and Indonesia.

Our research strengths include biomedical and clinical sciences, culture, policy and society, health and human behaviour, molecular science and technology, defence, engineering, water and environment. Our research contributions are rich and growing, with some 90 per cent ranked at or above world class<sup>4</sup>.

The new Flinders train service connects our main campus to Tonsley and the CBD. The adjacent Flinders Village development has commenced and will include research facilities, student accommodation, shops, and other amenities in a thriving urban centre.

We offer undergraduate and postgraduate courses for some 26,000 students. Our 5,000 international students come from more than 100 countries, and our main campus features on-site accommodation for 560 students and an international pathways centre.

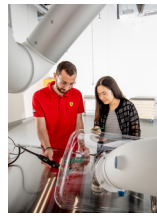
1 Times Higher Education World University Rankings 2021 according to the International Association of Universities

2 Good Universities Guide 2021

3 UBI World Benchmark Study 2019

4 Flinders rating 89.7per cent, rounded up to 90per cent. Excellence in Research for Australia, 2018





### **Vice-Chancellor and President**

Professor Carolyn Evans  
P 07 5552 8178 | F 07 5552 8777  
vc@griffith.edu.au

### **Chancellor**

Mr Henry Smerdon AM DUniv

### **Chief Marketing Officer**

Mr Phillip Stork  
P 07 5552 7844  
p.stork@griffith.edu.au

### **Contact Details**

Parklands Drive  
Southport QLD 4222  
P 07 5552 8800 | F 07 5552 8854

### **Website**

[griffith.edu.au](http://griffith.edu.au)

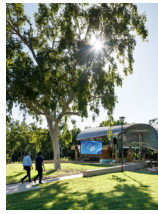
### **Campus Locations**

Digital  
Gold Coast  
Logan  
Mt Gravatt  
Nathan  
South Bank

Griffith University is one of Australia's most innovative tertiary institutions and an influential contributor to education and research in the Asia-Pacific region. Since opening in 1975, Griffith has grown from a single campus of 451 students to a comprehensive university with more than 50,000 students across five campuses in South East Queensland and its Digital campus, with a network of more than 200,000 graduates.

Ranking in the top two per cent of universities worldwide, Griffith consistently performs in the top 250 of the leading global indices. Griffith also ranks highly as a young university, regularly featuring in the QS Top 50 Under 50 university rankings and Times Higher Education Young University Rankings. In the 2018 Excellence in Research for Australia results, Griffith was rated at world standard or above in 59 specific fields of research, 20 of which were rated at the highest possible standard.

Griffith has a history of offering new and innovative degrees to meet the changing needs of students, industry and the community, and introduced Australia's first degrees in fields such as Asian studies and environmental science. Today, Griffith offers more than 200 undergraduate, postgraduate and research degrees in: architecture, construction and planning; business and government; criminology and law; education; engineering, IT and aviation; humanities, languages and social science; medicine, dentistry and health; music and performing arts; science and environment; and visual and creative arts. These degrees are informed by cutting-edge research and delivered by some of Australia's most highly awarded teachers. The university features prominently in national teaching awards and citations, with three Griffith teachers having won prestigious Australian Awards for University Teacher of the Year since 2014.



**Vice-Chancellor and President**

Professor Sandra Harding AO  
P 07 4781 4165 | F 07 4781 4050  
vc@jcu.edu.au

**Chancellor**

Mr Bill Tweddell

**Head of Media & Communications**

Mr Richard Davis  
P 07 4781 4822  
richard.davis@jcu.edu.au

**Contact Details**

1 James Cook Drive  
Douglas 4814  
P 07 4781 4111 | F 07 4779 6371  
study@jcu.edu.au

**Website**

jcu.edu.au

**Campus Locations**

Cairns  
Singapore  
Townsville, Douglas

James Cook University (JCU) is unique among Australian universities, in that it is woven into the intellectual, economic and social fabric of our tropical locations.

JCU is Queensland's second oldest university. It started its journey as the University College of Townsville in 1961, under the stewardship of the University of Queensland, and in 1970, James Cook University was established with its founding legislation providing the mandate for the strategic direction the university has pursued; to seek knowledge-based ways to help the world's tropical regions prosper.

JCU is defined by the tropics. Its main campuses are in the heart of the tropics – Cairns, Singapore and Townsville. The campuses are complemented and extended by regional and remote study centres and research stations. JCU's Australian campuses and field stations are located near the World Heritage-listed Great Barrier Reef Marine Park and the rainforests of the Wet Tropics region. This unique environment attracts students from around the world.

JCU plays a key role in preparing the professional workforce for northern Australia, and the university offers a comprehensive suite of professionally accredited programs including medicine, dentistry, pharmacy, physiotherapy, occupational therapy, speech therapy, veterinary sciences, psychology, nursing, sport and exercise science, engineering, law, education, and a range of programs in business, science, social science and humanities.

JCU is ranked among the top two per cent of the world's universities [Academic Ranking of World Universities]. The university has an international reputation for the quality of its teaching and research, with recognised strengths in environmental science and management; coral reef science, ecology, and fisheries sciences; geology; evolutionary biology; organic and inorganic chemistry; oceanography; physical geography and environmental geoscience; medical microbiology; tropical health and medicine; vector-borne diseases; immunology; archaeology; and linguistics.

JCU is home to more than 20 major research centres and institutes, including the ARC Centre of Excellence for Coral Reef Studies, The Cairns Institute and the Australian Institute of Tropical Health and Medicine (AITHM).

For the past 10 years, the Good Universities Guide has awarded JCU five stars for graduate employment. Employers value JCU graduates for their combination of theoretical and practical experience, as well as their communication and technology skills.



### **Vice-Chancellor and President**

Professor John Dewar AO  
P 03 9479 2000 | F 03 9471 0093  
vc@latrobe.edu.au

### **Chancellor**

The Hon John Brumby AO

### **Director - Media and Communications**

Ms Claire Bowers  
P 03 9479 2315  
c.bowers@latrobe.edu.au

### **Contact Details**

Plenty Road  
Bundoora VIC 3086  
P 03 9479 1111 | F 03 9478 5814

### **Website**

latrobe.edu.au

### **Campus Locations**

Albury-Wodonga  
Bendigo  
Melbourne (Bundoora)  
Melbourne (Collins Street)  
Mildura  
Shepparton  
Sydney

For more than 50 years, La Trobe University has been transforming people and societies. With a dual emphasis on excellence and diversity, we put our students at the centre of everything we do.

Whether it's our innovations in teaching and learning, our strong graduate employment outcomes or our leading research, La Trobe consistently rates among the world's best. Ranked in the top one per cent of universities worldwide, La Trobe is firmly positioned in the top 400 of all three major world university rankings. In 2020, the respected Times Higher Education World Ranking placed La Trobe at 234 in the world, marking the third consecutive year the University has risen by a full band in the rankings.

The 2020 Times Higher Education Impact Ranking saw La Trobe place fourth in the world, third in Australia and first in Victoria for overall contribution to the United Nations' Sustainable Development Goals (SDGs). The university also ranked first in the world for gender equality and second for its contribution to health and wellbeing.

In the 2018 Excellence for Research in Australia report, La Trobe's broad areas of research are all rated at, above or well above world standard. The university is one of only 12 to achieve 100 per cent world-standard success in the broad areas of research.

We've worked hard to develop a global reputation, expanding our reach to seven campuses across Victoria and New South Wales, and producing world-class research that addresses the major issues of our time. We have a five-star QS rating for world-standard facilities, teaching and research, as well as innovation, inclusiveness and internationalisation.

The higher education environment is changing rapidly, and La Trobe is uniquely placed to excel. By leveraging our strengths and ethos of excellence and diversity, we're redefining what it means to be a great university for the 21st century. We're more innovative and connected to our many communities than ever before.

\* Times Higher Education (THE), 2020, World University Rankings 2021; Consejo Superior de Investigaciones Científicas (CSIC), 2020, Ranking Web of Universities  
\* Times Higher Education (THE), 2020, World University Rankings 2021  
\* Times Higher Education (THE), 2020, Impact Rankings 2020  
\* Australian Research Council, 2019, Excellence in Research for Australia (ERA) Outcomes 2018  
\* Quacquarelli Symonds (QS) Stars University Ratings, 2019, QS Stars University Ratings 2019



### **Vice-Chancellor and President**

Professor S Bruce Dowton  
P 02 9850 7440 | F 02 9850 9950  
vc@mq.edu.au

### **Chancellor**

Dr Martin Parkinson

### **Contact Details**

North Ryde NSW 2109  
P 02 9850 7111

### **Website**

mq.edu.au

### **Campus Location**

North Ryde, Sydney

### **A university powered by human collaboration**

Macquarie – ranked among the top one per cent of universities in the world – is a university engaged with the real and often complex problems and opportunities that define our lives.

Since our foundation more than 55 years ago, we have aspired to be a different type of university: one unbound by ivory towers and sandstone walls. Rather, we are focused on fostering collaboration between students, academics, industry and society. Together we are advancing world-class theoretical thinking and translating it into real-world solutions.

### **Where collaboration meets innovation**

Macquarie is uniquely located in the heart of Australia's largest high-tech precinct, and our 40,000 students and 3000 staff thrive on a campus that is dynamic, sustainable and built for collaboration.

With more than 300 leading companies located on or around the Macquarie campus, our students are able to tap into industry connections that give them an edge in their future careers, while our staff have access to outstanding research and innovation opportunities with some of the world's leading organisations.

### **Expanding the frontiers of knowledge**

Macquarie enjoys an enviable reputation for research excellence – 100 per cent of our research is ranked at world standard or above.

We rank among the top four universities in Australia in computation theory and mathematics, the top five in philosophy, the top six in atmospheric sciences, the top seven in horticultural production, the top nine in analytical chemistry, and the top 10 in genetics and pure mathematics.

### **A proud tradition of innovating**

Macquarie has a robust record of innovation – we pioneered the technology that underpins modern wi-fi systems, the first synthetic funnel-web spider antivenom, and a sterile insect technique that is used to combat crop-destroying fruit flies. Today, we're focused on finding cures for motor neurone disease, Parkinson's disease and dementia.

### **Building successful graduates**

Our pioneering approach to teaching and learning is built around a connected learning community: our students are considered partners and co-creators in their learning experience. Their face-to-face experience is paired with sophisticated and interactive digital resources, and their degrees are linked to the latest research discoveries.



### **Vice-Chancellor**

Professor Duncan Maskell  
P 03 8344 6134  
vc@unimelb.edu.au

### **Chancellor**

Mr Allan J. Myers AC QC

### **Contact Details**

Grattan Street  
University of Melbourne VIC 3010  
P 03 8344 4000 | F 03 8344 5104

### **Website**

[unimelb.edu.au](http://unimelb.edu.au)

### **Campus Locations**

Parkville  
Burnley  
Creswick  
Dookie  
Shepparton  
Southbank  
Werribee

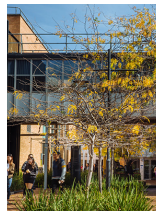
The University of Melbourne is a global leader in higher education. Across our campuses we convene brilliant minds from different disciplines and sectors to come together to address important questions and tackle grand challenges. In a disrupted world, that capacity has never been more important.

Our vision is to equip our students with a distinctive, future-facing education personalised around their ambitions and needs, enriched by global perspectives and embedded in a richly collaborative research culture. As active citizens and future leaders, our students represent our greatest contribution to the world, and are at the heart of everything we do.

We serve society by engaging with our communities and ensuring education and research are inspired from the outset by need and for the benefit of society, while remaining committed to allowing academic freedom to flourish. In this, we remain true to our purpose and fulfil our mission as a public-spirited organisation, dedicated to the principles of fairness, equality and excellence in everything we do.

We strive for an environment that is inclusive and celebrates diversity.

Beyond our campuses we imagine an Australia that is ambitious, forward thinking and increasing its reputation and influence globally. We are committed to playing a part in achieving this – building on our advantageous location in one of the world's most exciting cities, in a region rapidly becoming a hub for innovative education, research and collaboration.



**President and Vice-Chancellor**

Professor Margaret Gardner AC  
P 03 9902 9851  
margaret.gardner@monash.edu.au

**Chancellor**

Mr Simon McKeon AO

**Chief Marketing Officer**

Mr Fabian Marrone  
P 03 9903 2329  
fabian.marrone@monash.edu.au

**Contact Details**

Monash University  
Clayton VIC 3800  
P 03 9902 6000 | F 03 9905 4007

**Website**

monash.edu

**Locations**

**Australian campuses**

- Caulfield
- Clayton
- Parkville
- Peninsula

**International locations**

- China
- India
- Italy
- Malaysia

Monash is a modern, global, research-intensive university, delivering education and research excellence in Australia and across the Indo-Pacific.

We're making positive change through our education, research and alumni. We're particularly focused on making an impact on today's major global challenges – climate change, geopolitical insecurities and fostering healthy communities.

**Our place in the world**

We're Australia's largest university, with four Australian campuses on the lands of the Wurundjeri and the Boonwurrung people of the Kulin Nations. Our international campuses are in Malaysia, China, India, Italy and the first foreign university campus in Indonesia. More than 80,000 students are currently studying with us, and we have an active alumni community of 420,000-plus across 160 countries. Our global reputation for education and research excellence ranks us in the world's top-100 universities (48th in the 2021 US News and World Report Best Global University Rankings; 64th in the 2021 Times Higher Education World University Rankings), and we're a founding member of the Group of Eight.

**Education fused with enterprise**

A Monash education is global, integrated with the world of practice and taught by academics who are actively researching in their chosen fields.

We prepare students for successful careers through global industry partnerships and collaboration; participation in innovative

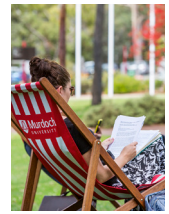
enterprises, including through start-ups and spinouts such as our Generator and Accelerator program; integrated work and experience; and an array of study options – undergraduate (single and double), postgraduate, higher degree research, open online courses, microcredentials, professional development and alternative pathways. We offer breadth, flexibility and choice.

**Solving global challenges**

Our purpose to solve the challenges of the age is reflected in notable achievements, including;

- the first model of early human embryos from skin cells (iBlastoids);
- the world's first 3D-printed full-size jet engine;
- the discovery that low-dose aspirin doesn't prolong healthy life in people aged over 70;
- the World Mosquito Program to eliminate dengue and related diseases; and
- the Revitalising Informal Settlements and their Environments (RISE) program to provide clean water and improved health in disadvantaged communities in Indonesia and Fiji.

We've made a landmark commitment to the UN Sustainable Development Goals, and we're the first Australian university to commit to an energy reduction target through our initiative to achieve net zero emissions by 2030.



### Vice-Chancellor

Professor Eeva Leinonen  
(until October 2021)  
P 08 9360 6300 | F 08 9360 2931  
vc@murdoch.edu.au

### Chancellor

Mr Gary Smith

### Director - Marketing and Communications

Mr Neil Cullingford  
P 08 9360 6835  
n.cullingford@murdoch.edu.au

### Contact Details

South Street  
Murdoch WA 6150  
P 08 9360 6000 | F 08 9310 4233

### Website

[murdoch.edu.au](http://murdoch.edu.au)

### Campus Locations

Murdoch  
Rockingham  
Mandurah  
Dubai  
Singapore

Murdoch University strives to be a creative force for current and future generations, tackling the world's biggest challenges through outstanding translational research and educating free thinkers who thrive in society and industry.

Murdoch is ranked in the Times Higher Education Top 100 universities in the world under the age of 50. In the 2021 Good Universities Guide, Murdoch achieved five-star rankings across the areas of overall undergraduate experience, student support, teaching quality and student to staff ratios – placing it in the top 20 per cent of all universities across Australia.

With research expertise in multidisciplinary areas, Murdoch provides students with a holistic learning experience that engages with the challenges of our time. Through work-integrated learning and embedded career learning units, students are equipped with the skills and confidence to make an immediate, valuable contribution to the workforce.

Murdoch University's flagship campus in Perth is one of the largest urban campuses in Australia and boasts a vast expanse of natural bushland teeming with unique wildlife.

The Perth campus is adjacent to a new urban centre known as the Murdoch Specialised Activity Centre, where an integrated knowledge and health precinct will support partnerships with government and industry to further innovative medical, environmental and scientific research.

A new teaching and learning space in the Perth CBD has brought Murdoch into the heart of WA. A planned vertical campus in the city centre, including a Digital Futures Academy and an eSports hub, will deliver a vibrant knowledge-based precinct adjacent to existing retail, recreation, entertainment, accommodation and transport infrastructure.

A Mandurah campus, located in Perth's fast-growing southern corridor, is home to popular nursing degrees taught in state-of-the-art simulation suites. A third campus in Rockingham hosts Murdoch's pro bono law clinic SCALES and the university's successful pathways and enabling programs, which give students from a variety of backgrounds the opportunity to access a tertiary education through alternative entry streams.



### **Vice-Chancellor and CEO**

Professor Brigid Heywood  
P 02 6773 2004  
vc@une.edu.au

### **Chancellor**

Mr James Harris

### **UNE Media**

P 02 6773 2551  
media@une.edu.au

### **Director, Office of Advancement, Communications and Events**

Mr Robert Heather  
P 02 6773 2725  
robert.heather@une.edu.au

### **Contact Details**

Elm Avenue  
Armidale NSW 2351  
P 02 6773 3333

### **Website**

une.edu.au

### **Campus Locations**

Armidale  
Parramatta  
Tamworth

The University of New England (UNE) was Australia's first regional university with a founding mission to help people adapt to a changing world. UNE remains driven by its commitment to rural communities and regional educational frameworks targeted at social and economic opportunity.

### **Education - when and where it is needed**

UNE pioneered distance education in the 1950s and across the decades has enabled workforce development regardless of location or personal circumstances. UNE delivers Australia's most flexible educational experience to over 25,000 online students per annum, with support from the Armidale and Tamworth campuses, nine regional study centres and UNE Sydney.

A larger UNE presence in Tamworth will help remove barriers and improve participation in higher education. It will allow UNE to be responsive to the needs of industry and the community by producing work-ready graduates who will support the growth ambitions of the city.

### **A high-quality holistic experience**

In addition to a rich distance education, UNE also provides 6,000 students from Australia and over 75 nations with a residential experience. Our accommodation options suit a range of needs - from traditional, catered colleges to independent apartment-style living, a sporting complex and cultural facilities.

UNE aims for the highest academic standards and has achieved the maximum five stars for overall student experience in each of the past 15 years; a feat unmatched by any other Australian public university. For teaching quality and student support, UNE is rated number one in NSW.

A diverse portfolio of academic and professional courses covers arts and humanities, education and health, economics, business, law, medicine, social and behavioural sciences, sport and exercise, and natural and environmental sciences. Our bespoke courses were developed to allow working adults to design a degree program to suit their needs.

### **Knowledge creation to address real problems**

UNE enjoys a reputation for research excellence based on strong linkages with national research centres and institutes. UNE is internationally recognised for contributions to applied animal genetics and breeding, agriculture and law, social sciences and health and medicine in a regional context. The UNE PhD (Innovation) programme embeds practical research projects in industries and communities.

We drive our research through a knowledge creation paradigm which brings academics, researchers, stakeholders and end users together to address social and economic improvements for Australia, South-East Asia and the Pacific. The impact of UNE research equates to billions of dollars of added value.





### President and Vice-Chancellor

Professor Ian Jacobs  
P 02 9385 2788  
president@unsw.edu.au

### Chancellor

Mr David Gonski AC

### Chief Communications Officer

Darren Goodsir  
P 02 9385 5610  
d.goodsir@unsw.edu.au

### Contact Details

Kensington NSW 2052  
P 02 9385 1000  
Follow @unsw

### Website

unsw.edu.au

### Campus Locations

Kensington  
Paddington  
Canberra at ADFA

UNSW Sydney is a powerhouse of cutting-edge research, teaching and innovation. We are one of the top 70 universities in the world, with more than 62,500 students and a 7,000-strong research community.

### Research for the public good

Located in Sydney, Australia's largest city, the university was established in 1949 with a unique focus on the scientific, technological and professional disciplines. Today, we are an education and research-intensive university delivering outstanding teaching alongside research that has an impact on people's lives around the world.

UNSW is committed to making a difference by focusing on areas critical to the future. Pioneering research and sustained innovation are addressing some of the most important issues of today – from climate change and renewable energies to lifesaving medical treatments and breakthrough technologies. In the social sciences, our research informs policy and expert commentary in issues facing society, ranging from human rights and constitutional recognition of Indigenous Australians to public health and population ageing.

### A solid global profile

We continue to climb the global rankings: UNSW ranks 43rd in the 2020 QS World University Rankings; 71st in the 2020 *Times Higher Education* World University Rankings; and 94th in the 2019 Academic Ranking of World Universities.

Our research is rated among the best in the world. UNSW obtained the top rating of five for 'outstanding performance well above world standard' in 17 broad subject areas in the Australian Research Council's 2018 Excellence in Research for Australia (ERA) analysis. The result was the best of any university in Australia.

### Robust international networks

We are proud of our national and international networks, which support our belief that strength through collaboration and generosity in partnerships will enable society to solve its greatest challenges. UNSW is a founding member of both the Group of Eight, a coalition of Australia's leading research-intensive universities, and the prestigious Universitas21 international association.

The main UNSW campus is located on a 38-hectare site at Kensington, seven kilometres from the centre of Sydney. Other major campuses are the art & design campus in the Sydney suburb of Paddington and UNSW Canberra at the Australian Defence Force Academy.



**Vice-Chancellor and President**

Professor Alex Zelinsky AO  
P 02 4921 5101  
alex.zelinsky@newcastle.edu.au

**Chancellor**

Mr Paul Jeans

**Chief Marketing Officer**

Mrs Tracy Chalk  
P 02 4921 6  
tracy.chalk@newcastle.edu.au

**Contact Details**

University Drive  
Callaghan NSW 2308  
P 02 4921 5000 | F 02 4985 4200  
askuon@newcastle.edu.au

**Website**

newcastle.edu.au

**Campus Locations**

Newcastle (Callaghan)  
Newcastle City  
Central Coast  
Port Macquarie  
Sydney  
Singapore

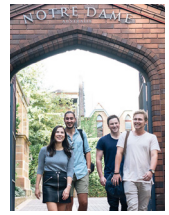
At the University of Newcastle we are guided by our *Looking Ahead Strategic Plan 2020-2025* which stands on four core values: excellence, equity, engagement and sustainability. These underpin everything we do; they drive every student interaction, enrolment, and experience across our vibrant campuses in Newcastle City, Callaghan, Ourimbah, Sydney and Singapore.

The University of Newcastle has a long-standing commitment to equity and social justice. Our policies and practices widen participation, promote diversity and fairness, and seek to overcome injustice for all.

Our Centre of Excellence for Equity in Higher Education and the Wollotuka Institute, our flagship body for Indigenous activities, demonstrate our pledge of social equity, cultural cohesion, and our deep respect for the Indigenous heritage of our nation. We have the maximum five-star rating for social equity from the 2021 Good Universities Guide. In 2021, we launched our Indigenous Education and Research Framework; our pioneering document to guide all of us in our commitment to excellence in Indigenous culture, education and research.

We are a top 200 university as ranked by QS World University. Our global impact is grown from a deep-rooted connection to our regions. A better tomorrow lies in our ability to find new solutions to some of the planet's greatest challenges – and we strive to take solutions developed in our backyard to the rest of the world. As we achieve this goal through collaborations with local and global industry and research partners, we're proud that more than 95 per cent of our research is considered 'at or above world standard'.

We understand that if we truly care about the future for our students and our communities, we must care for our planet. We operate using 100 per cent renewable electricity and are on track to be carbon neutral by 2025. We also know that environmental impact is not something organisations or governments can do alone. We have been recognised as the global leader in the Times Higher Education UN Sustainable Development Goals for building partnerships that achieve a sustainable future.



### **Vice-Chancellor**

Professor Francis Campbell  
vc@nd.edu.au

### **Chancellor**

The Hon Chris Ellison

### **National Director of Communications**

Ms Katrina Lee  
katrina.lee@nd.edu.au

### **Contact Details**

Fremantle  
32 Mouat St  
Fremantle WA 6959  
P 08 9433 0555 | F 08 9433 0544  
fremantle.reception@nd.edu.au

Sydney  
140 Broadway  
Chippendale NSW 2008  
P 02 8204 4400 | F 02 8204 4422  
sydney@nd.edu.au

### **Website**

notredame.edu.au

### **Campus Locations**

Fremantle  
Sydney  
Broome

The University of Notre Dame Australia is a national Catholic university with more than 11,000 students studying across its campuses in Fremantle and Broome, Western Australia, and Sydney in New South Wales. The university also has seven clinical schools around regional NSW and Victoria.

Undergraduate, postgraduate and research degrees are offered through the university's three faculties: the Faculty of Arts, Science, Law and Business, the Faculty of Education, Philosophy & Theology, and the Faculty of Medicine, Nursing & Midwifery and Health Sciences.

The university aims to empower a new generation of ethical leaders and help prepare students to navigate the challenges of an ever-changing work environment by encouraging them to view the world from a new perspective.

Critical thinking is at the core of each degree at Notre Dame, an approach that equips students for a fulfilling life, as well as a successful career. It also gives Notre Dame students an edge in the workforce, as reflected in results from the Federal Government's Quality Indicators for Learning and Teaching suite of surveys.

Notre Dame is the number one university in Australia for overall satisfaction among undergraduate graduates (Graduate Outcomes Survey 2019), as well as in the top two nationally for medium term, full-time employment among postgraduates (Graduate Outcomes Survey – Longitudinal 2020).

In addition, Notre Dame is the number one university in Australia for skills development (Student Experience Survey 2019) and achieved five-star ratings in the undergraduate category for overall experience, teaching quality and skills development – for the 14th consecutive year – in the Good Universities Guide 2021.

"Notre Dame's holistic approach to education is designed to develop students both academically and personally. This underscores the reason why our overall quality of education experience is among the best in Australia," said Notre Dame's Vice Chancellor, Professor Francis Campbell.

The university's unique, personalised admissions process is based not only on a prospective student's academic record, but also takes into account personal qualities, motivation to study, potential to succeed and community contributions.

Students apply direct to the university. Visit [www.notredame.edu.au](http://www.notredame.edu.au).



### **Vice-Chancellor and President**

Professor Deborah Terry AO  
P 07 3365 1300 | F 07 3365 1266  
vc@uq.edu.au

### **Chancellor**

Mr Peter N Varghese AO

### **Chief Marketing and Communication Officer**

Ms Kelly Robinson  
P 07 3365 6060  
kelly.robinson@uq.edu.au

### **Contact Details**

St Lucia QLD 4072  
P 07 3365 1111 | F 07 3365 1100  
ask@uq.edu.au

### **Website**

uq.edu.au

### **Campus Locations**

St Lucia  
Gatton  
Herston

The University of Queensland (UQ) is Australia's most awarded university for teaching\*.

For more than a century, UQ's exceptional study experiences, research excellence and collaborative partnerships have delivered knowledge leadership for a better world.

Across UQ's three campuses, our 7,200 staff and 54,986 students – including 20,700 postgraduates and around 20,000 international students from 142 countries – teach, research and study.

With a strong focus on teaching excellence, UQ attracts the majority of Queensland's high achievers, as well as top interstate and overseas students.

UQ's 287,300 graduates are an engaged network of global alumni, who span more than 170 countries, and include more than 15,400 PhDs.

UQ consistently ranks among the world's top universities as measured by several key independent rankings, including the CWTS Leiden Ranking (31)\*\*, Performance Ranking of Scientific Papers for World Universities (39), U.S. News Best Global Universities Rankings (36), QS World University Rankings (46), Academic Ranking of World Universities (54), and Times Higher Education World University Rankings (62).

With a 2020 operating revenue of \$2.12 billion, including more than \$634 million in research investment, UQ's six faculties and eight globally recognised research institutes cover a remarkable breadth of teaching and research.

In recognition of our research quality, UQ was acknowledged in the 2018 Excellence in Research for Australia initiative for above-world-standard research in 93 specialised fields – more than any other Australian university.

Through UniQuest, UQ's technology transfer and commercialisation company, UQ is also Australia's leading university for commercialisation revenue, number of active startup companies, and value of equity held in startup companies formed from university intellectual property.

UQ is one of only three Australian members of the global Universitas 21; a founding member of the Group of Eight universities; a member of Universities Australia and the Association of Pacific Rim Universities; and one of only three Australian charter members of the prestigious edX consortium, the world's leading not-for-profit consortium of massive open online courses.

\* UQ has won more national teaching awards than any other Australian university.

\*\* This ranking is measured by the Impact indicator P, P (top 10 per cent), and PP (top 10 per cent) with fractional counting.



### Vice-Chancellor and President

Professor Margaret Sheil AO  
P 07 3138 8086  
vc@qut.edu.au

### Chancellor

Dr Xiaoling Liu

### Director – Marketing and Communication

Mr Xavier Amouroux  
P 07 3138 2386  
xavier.amouroux@qut.edu.au

### Contact Details

2 George Street  
Brisbane QLD 4000  
P 07 3138 2000  
askqut@qut.edu.au

### Website

qut.edu.au

### Campus Locations

Gardens Point  
Kelvin Grove

QUT is a major Australian university with a global reputation and a 'real world' focus. Our courses equip our students and graduates with the skills they need for the world of today and tomorrow.

We are an ambitious institution, with a rapidly growing research output focused on technology and innovation. The Times Higher Education 2020 ranked QUT in the top 180 universities in the world and the best young university in Australia.

Our strategic plan, Blueprint 6, establishes QUT as 'the university for the real world', and charts our provision of transformative education and research that is relevant to our communities.

With approximately 50,000 students, QUT places a premium on the national and international accreditation of our professional degrees. We are transforming the learning experience and embed work integrated learning in courses and have a strong focus on developing entrepreneurial skills.

We offer academic programs in fields spanning business, creative industries, education, engineering, health, law, science, and social justice across five faculties.

QUT Business School's agreement with the MIT Sloan School of Management is a strategic collaboration which provides our students and staff with multiple advantages including academic exchange, an immersion program for MBA and EMBA students while access to MIT's global entrepreneurial networks enhances our entrepreneurship program.

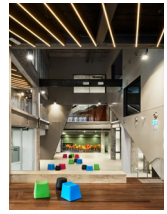
QUTeX provides executive education and professional development to both individuals and organisations, and QUT Online lets students learn when it suits, through courses delivered entirely online. QUT College provides pathways for all students into our undergraduate programs.

QUT has two inner-city campuses in Brisbane with our Gardens Point campus home to The Cube, one of the world's largest digital display systems.

At our Kelvin Grove campus, the Creative Industries Precinct provides outstanding studio spaces for the performance disciplines while the Education Precinct demonstrates our commitment to technology and the digital world.

Well known for our strong links to industry and government, the high impact of our research which involves multidisciplinary teams can be seen across areas as diverse as climate change mitigation, digital media, materials science and biomedical innovation.

QUT has been named one of the fastest rising universities in the world, and top in Australia, for scientific research in the 2019's Nature Index of high-quality research outputs.



**Vice-Chancellor and President**

Professor Martin Bean CBE  
(until June 2021)  
P 03 9925 1999  
vc@rmit.edu.au

**Chancellor**

Dr Ziggy Switkowski AO

**RMIT External  
Communications**

Ms Karen Phelan  
P 0420 557 114  
karen.phelan@rmit.edu.au

**Contact Details**

124 La Trobe Street  
Melbourne VIC 3000  
P 03 9925 2000 | F 03 9925 3185  
study@rmit.edu.au

**Website**

rmit.edu.au

**Campus Locations**

Melbourne - City  
Bundoora  
Brunswick  
Ho Chi Minh City  
Hanoi

RMIT is a multi-sector university of technology, design and enterprise with 95,000 students and almost 10,000 staff globally. RMIT's mission is to help shape the world through research, innovation, quality teaching and engagement, and to create transformative experiences for students, getting them ready for life and work.

With strong industry connections forged over 133 years, collaboration with industry remains integral to RMIT's leadership in education, applied and innovative research, and to the development of highly skilled, globally focused graduates.

RMIT is redefining its relationship in working with and supporting Aboriginal self-determination. The goal is to achieve lasting transformation by maturing values, culture, policy and structures in a way that embeds reconciliation in everything the university does. RMIT is changing its ways of knowing and working to support sustainable reconciliation and activate a relationship between Indigenous and non-Indigenous people.

RMIT's three campuses in Melbourne – Melbourne City, Brunswick and Bundoora – are located on the unceded lands of the people of the Woi Wurrung and Boon Wurrung language groups of the eastern Kulin Nation.

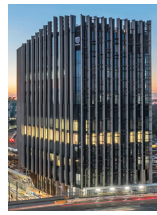
As a global university, RMIT has two campuses and a language centre in Vietnam and a research and industry collaboration centre in Barcelona, Spain. RMIT also offers programs through partners in destinations including Singapore, Hong Kong, Sri Lanka and mainland China, with research and industry partnerships on every continent.

RMIT was ranked 223rd in the 2021 QS World University Rankings. The university is also ranked eighth in Australia and 39th in East Asia and the Pacific for employer reputation, and 18th globally in the Top 50 Universities Under 50 Years Old. The University ranked 281st globally in the 2021 US News Best Global Universities rankings. RMIT also ranks in the world's top 400 in the Academic Ranking of World Universities (ARWU) and the Times Higher Education (THE) World University Rankings. RMIT ranked 10th globally in the 2020 Times Higher Education Impact Ranking.

For more information, visit [rmit.edu.au/about](http://rmit.edu.au/about).



# University of South Australia



## Vice-Chancellor and President

Professor David Lloyd  
P 08 8302 0500 | F 08 8302 0501  
david.lloyd@unisa.edu.au

## Chancellor

Ms Pauline Carr

## Chief Marketing and Communications Officer

Mr Alan Brideson  
P 08 8302 0625  
alan.brideson@unisa.edu.au

## Contact Details

GPO Box 2471,  
Adelaide SA 5001  
P 08 8302 6611 | F 08 8302 2466

## Website

[unisa.edu.au](http://unisa.edu.au)

## Campus Locations

City East  
City West  
Magill  
Mawson Lakes  
Whyalla  
Mount Gambier

The University of South Australia (UniSA) is Australia's university of enterprise, known for a culture of creativity and innovation with global and national links to academic, research and industry partners. Its graduates are global professionals ready to create and respond to change. Its research is inventive and adventurous and it creates new knowledge that is central to global economic and social prosperity.

It is considered one of the world's best young universities. Times Higher Education (THE) ranks it as number 25 in the world; Quacarelli Symonds ranks it as number 29. With a strong history of engagement with industry and the professions, UniSA was recently rated Australia's best for industry research income by THE. It was also ranked as South Australia's number one university for graduate careers by QILT.

The university's strong research environment focuses on areas such as ageing, scarce resources, future industries and cancer prevention and management. The close, collaborative engagement it enjoys with its many industry, government, collegiate and community partners is reflected in its the ranking as the number one in Australia for industry sourced research income.

With more than 35,000 students, almost 7,000 of whom are international students, UniSA is South Australia's largest university and offers degree programs in business, education, arts, social sciences, health sciences, information technology, engineering and the environment. Programs are designed with strong professional emphasis and in partnership with industry and the professions to ensure the career relevance of its teaching.

The university is also closely engaged with the communities it serves. It features MOD, Australia's future-focused museum of science, innovation and design; the Samstag Museum which presents a changing exhibitions program of contemporary visual art; and the Hawke Centre which engages with local and international communities through public lectures, seminars, and research projects. The university also has a strong equity mission and recently became the first South Australian university to unveil a stretch reconciliation action plan which creates greater opportunities for Aboriginal peoples in education and employment and embeds their culture into the university.



**Southern Cross  
University**



**Vice Chancellor and President**

Professor Tyrone Carlin  
P 02 6620 3703  
ovc@scu.edu.au

**Chancellor**

Mr Nick Burton Taylor AM

**Chief Marketing Officer**

Mr Dean Gould  
0411 657 381  
dean.gould@scu.edu.au

**Contact Details**

Military Road  
Lismore NSW 2480  
P 02 6620 3000 | F 02 6620 3700

**Website**

scu.edu.au

**Campus Locations**

Lismore  
Coffs Harbour  
Gold Coast

Southern Cross University is a multi-campus university on Australia's east coast with a dynamic teaching and research profile. We are proud of our reputation as a progressive institution, engaging with the communities we serve to create change that has impact around the world.

Southern Cross has three main campuses: at the Gold Coast in Queensland, and in Lismore and Coffs Harbour in New South Wales.

The regions we call home all have unique characteristics as study locations – from cosmopolitan cities, thriving industries and coastal lifestyles to living laboratories of great natural beauty and ecological diversity within easy reach of the campus. We operate branch campuses in Sydney, Melbourne and Perth in collaboration with EduCo and The Hotel School Sydney, Melbourne and Brisbane in partnership with Mulpha Australia. We also have a branch campus at Coomera on the Gold Coast.

Southern Cross offers a diverse range of undergraduate and postgraduate degrees in science and health disciplines, law, engineering, education, humanities, music, creative arts, business and information technology. Specialist degrees in Indigenous knowledge, marine science, osteopathy, naturopathy, midwifery and psychology as well as a suite of double degrees round out a rich academic portfolio.

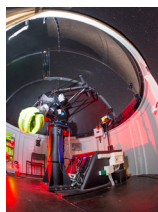
Our online courses are delivered through interactive teaching technologies with immersive learning experiences.

We have a strong focus on industry and community collaboration. Our degrees focus on developing practical, industry-specific skills and feature work placements and hands-on learning in laboratories, field trips and through participation in real-world projects.

Our industry-leading research centres are committed to research output with global relevance, be it marine ecology, flood mitigation, organic agriculture, plant and geoscience or adolescent development.

In the latest Excellence in Research for Australia report, Southern Cross achieved outstanding ratings of 'at world standard' or above in 23 research fields; of those, 14 were at the highest possible classification of 'well above world standard'.





### **Vice-Chancellor**

Professor Geraldine Mackenzie  
P 07 4631 2168  
vc@usq.edu.au

### **Chancellor**

Mr John Dornbusch

### **Executive Director, Marketing, Media and Communications**

Ms Kirsten Macgregor  
P 07 3470 4423  
kirsten.macgregor@usq.edu.au

### **Contact Details**

West Street  
Toowoomba QLD 4350  
P 07 4631 2100

### **Website**

usq.edu.au

### **Campus Locations**

Toowoomba  
Springfield  
Ipswich

University of Southern Queensland (USQ) is a young, dynamic university dedicated to providing quality programs and degrees in a flexible and supportive environment. In just over 50 years, USQ has become a prominent teaching and research institution providing education worldwide from three regional locations – Toowoomba, Springfield and Ipswich.

Responding to the needs of our rapidly growing and developing communities has seen USQ grow and expand into one of Australia's leading providers of on-campus and online programs both in Australia and overseas. We are committed to excellence in education, research and student experience.

By offering a mix of open and flexible programs in business, education, law and arts (including creative arts), health, engineering and surveying, and sciences (including paramedicine and aviation), USQ meets the educational needs of students, industries and communities all over the world.

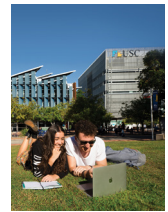
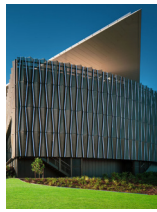
In 2021, USQ has been ranked the number one university in Queensland for the highest median graduate starting salary (Good Universities Guide, 2021).

The university's world-class researchers are focused on solving regional and global problems by pushing the boundaries of scientific discovery, as evidenced in 18 fields of research receiving the ultimate accolade of 'well above world standard' (ERA Results 2019).

USQ is proud to have the largest space research program in Queensland, scientists who work to improve cancer survivorship and quality of life, and researchers who are committed to creating innovative materials for the construction industry.

We are committed to cultural diversity, inclusion, understanding and tolerance.

To find out more about studying at USQ, visit [www.usq.edu.au/study](http://www.usq.edu.au/study)



### **Vice-Chancellor and President**

Professor Helen Bartlett  
P 07 5430 1101  
vcoffice@usc.edu.au

### **Chancellor**

Sir Angus Houston AK, AFC (Ret'd)

### **Director – Marketing and External Engagement**

Ms Karyn Brinkley  
P 07 5430 1116  
kbrinkley@usc.edu.au

### **Contact Details**

90 Sippy Downs Drive  
Sippy Downs QLD 4556  
P 07 5430 1234 | F 07 5430 1111  
information@usc.edu.au

### **Website**

usc.edu.au

### **Campus locations**

Sunshine Coast  
Moreton Bay  
Fraser Coast  
Gympie  
Caboolture  
South Bank

USC is independently ranked by students as one of Australia's best universities for teaching quality and overall student experience.

Our students enjoy hands-on learning opportunities and flexible study options across more than 120 programs, at a network of teaching locations between Moreton Bay and the Fraser Coast. Since 1996, we have supported almost 30,000 graduates achieve their educational and career goals.

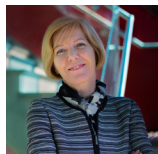
All our programs include practical training or internships, and focus on core skills students need to succeed in the future workplace, which is one of the reasons we are considered one of the best universities in Australia for employer satisfaction with graduates.

Our learning facilities are some of the most advanced in Australia. Students learn in simulated nursing and paramedic labs, a high-performance sport and training precinct, advanced engineering areas for building and making designs, and a state-of-the-art CAVE2™ 3D visualisation studio.

USC research brings some of the brightest minds from around the world to live and work in our communities. From finding solutions to environmental challenges, to regional health and mental health care, USC works to solve problems that directly impact our regions.

Our international reputation for research is growing every year, too, with 26 research fields rated at world standard or above. Leading research areas include environmental sciences, nursing, medical and mental health sciences, biological sciences, engineering, technology, psychology, agricultural and veterinary sciences, human studies and communication.

We are committed to unlocking the innovation, productivity and full human potential of our regions, and to working with government, industry and community to encourage prosperity in a knowledge-driven world. Each year, we contribute more than half a billion dollars to our local economies, and our network of study locations lets us tailor USC's programs and research to deliver local campus experiences that build capacity and drive growth across South-East Queensland's coastal corridor.



### Vice-Chancellor and President

Professor Pascale Quester  
P 03 9214 8163  
vc@swin.edu.au

### Chancellor

Mr John Pollaers OAM

### Director - Communications

Ms Elizabeth Bardwell  
P 03 9214 5968  
ebardwell@swin.edu.au

### Contact Details

John Street  
Hawthorn VIC 3122  
P 03 9214 8000

### Website

swinburne.edu.au

### Campus Locations

Hawthorn  
Croydon  
Wantirna  
Sarawak, Malaysia

Swinburne University of Technology is a dual-sector institution, defined and inspired by technology and innovation, and renowned for its strong industry and community engagement in research and education. With a vision to bring people and technology together to build a better world, Swinburne is committed to creating the prototype of a new and different university for the 21st century.

### Transforming the future of education

Swinburne is giving students the knowledge and experience they need to make a lasting impact on the workplaces of tomorrow. Swinburne learners are guaranteed high-quality, authentic, industry-based work experience as part of their course, made possible by Swinburne's extensive partnerships with leading Australian and global organisations.

Swinburne's ethos of 'learning by doing' ensures students graduate job-ready and are equipped to realise their full potential in a tech-rich future. As well as providing exceptional on-campus experiences, Swinburne is also a leader in online learning through Swinburne Online and Open Universities Australia.

In recent years, Swinburne has received consecutive five-star overall experience ratings from students. In 2020, Swinburne was rated equal first among Victorian universities for providing the best entire educational experience for undergraduate students in the federal government's Quality Indicators for Learning and Teaching (QILT) program.

### Creating tomorrow's technology

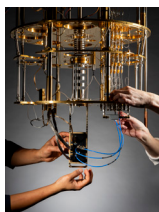
Swinburne consistently places in the top three per cent of universities worldwide in major rankings.

Swinburne researchers have a reputation for high quality research with particular strengths in astronomy, physics, engineering, materials science, computer science and information technology, design and innovation, health sciences, neurosciences and mental health.

Underpinned by leading digital technology platforms, Swinburne researchers are collaborating with industry, communities and government through embedded partnerships to co-create technology solutions to transform local and global communities.

### A national and global presence

Swinburne has three campuses in Melbourne – at Hawthorn, Croydon and Wantirna – offering tertiary education for higher education and Pathways and Vocational Education (PAVE). A location in Parramatta, Sydney also offers a suite of sought-after Swinburne courses. A fourth campus in Sarawak, Malaysia, and new locations in Vietnam and China further connects Swinburne to some of the fastest-growing regions in the world.



**Vice-Chancellor and Principal**

Professor Stephen Garton AM  
(until July 2021)



Mr Mark Scott AO  
(from July 2021)

vice.chancellor@sydney.edu.au

**Chancellor**

Belinda Hutchinson AM

**Head, Media and Public Relations**

Ms Shehana Darda-Teixeira  
P 02 8627 9104 | M 0418 238 373  
shehana.darda-teixeira@sydney.edu.au

**Contact Details**

The University of Sydney  
Sydney NSW 2006  
P 1800 SYD UNI (1800 793 864)

**Website**

sydney.edu.au

**Campus Locations**

Camperdown/Darlington    Camden  
Cumberland                    Surry Hills  
Mallett Street                 Westmead  
Sydney Medical School  
campuses and teaching hospitals  
133 Castlereagh Street, CBD  
Sydney Conservatorium of Music  
One Tree Island Research Station

As Australia’s first university, the University of Sydney has a proud history of global leadership in education and research. We inspire people from all backgrounds to contribute to positive real-world change.

Our international rankings reflect our sustained track record of excellence and global reputation – we are regularly ranked in the top 50 universities worldwide and we ranked 2nd in the world in the THE University Impact Rankings 2020.

We offer an exceptional range of disciplines – more than 400 areas of study – and our community includes more than 70,000 students, 8,000 permanent and fixed-term staff and 380,000 alumni in more than 170 countries.

We engage with partners across industry, government, non-profit and community sectors to answer the biggest questions facing society, business and our communities worldwide.

**Reimagining education**

Our flexible undergraduate curriculum allows our students to choose the way they want to learn, gain hands-on experience, develop workplace-ready skills and learn across multiple disciplines. Our postgraduate courses enable students to advance their careers, pursue a passion and gain a higher qualification.

**Student Experience**

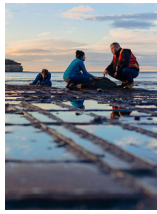
The university offers our students opportunities for enriched social interactions through more than 200 clubs and societies. Students benefit from access to sporting and performance facilities, museums, galleries, study spaces, and the chance to learn on one of the world’s most beautiful campuses.

**Research with impact**

Our research is driven by the big picture and a desire to make a positive impact. We find solutions to the world’s biggest problems by changing how we look at them – questioning assumptions and thinking differently. Our researchers look at problems from all angles, combining expertise from many disciplines. We’ve invested heavily in interdisciplinary research, in areas including obesity, diabetes and cardiovascular disease; inequality; nanoscience; mental health and brain science, and deepening understanding of Southeast Asia and China.

We’re a world-renowned research institution, with 100 per cent of our research ranked at world standard or above by the Australian Government’s Excellence in Research for Australia report.

In creating Australia’s first university, our founders recognised the power of education to change society. We hold that belief just as strongly today.



### **Vice-Chancellor and President**

Professor Rufus Black  
P 03 6226 2002 | F 03 6226 2001  
[vice.chancellor@utas.edu.au](mailto:vice.chancellor@utas.edu.au)

### **Chancellor**

The Hon Michael Field AC LLD  
[michael.field@utas.edu.au](mailto:michael.field@utas.edu.au)

### **Executive Director, Corporate Affairs**

Mr Jason Purdie  
P 03 6226 6297  
[jason.purdie@utas.edu.au](mailto:jason.purdie@utas.edu.au)

### **Contact Details**

Churchill Avenue  
Sandy Bay TAS 7005  
P 03 6226 2999 | F 03 6226 2018  
[media.office@utas.edu.au](mailto:media.office@utas.edu.au)

### **Website**

[utas.edu.au](http://utas.edu.au)

### **Campus Locations**

Hobart  
Cradle Coast  
Launceston  
Sydney

### **For Tasmania and from Tasmania**

The University of Tasmania is the fourth oldest university in Australia, established in 1890. Our university is highly regarded for teaching and academic excellence. Place shapes our mission and how we do it. Being the University of Tasmania makes us both a university for Tasmania and one where we do things from Tasmania. We have an incredible natural environment close at hand and the possibilities to provide a truly immersive experience for students.

We offer students on-campus accommodation and access to many societies and sports teams.

We believe life as a student is about more than attending class. There is plenty to do beyond our campuses too, whether it is enjoying Tasmania's vibrant arts culture or exploring our state's unique natural beauty.

### **Global connections**

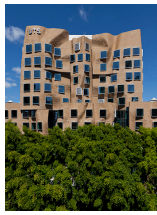
Our student population includes more than 6,000 international students. Our students have the opportunity to apply for student exchange or overseas study at more than 100 universities around the world.

### **A focus on excellence**

The University of Tasmania is ranked in the top 350 universities in the world and is Australia's premier university for teaching excellence, receiving more teaching awards than any other Australian university. In the Academic Ranking of World Universities, the University of Tasmania is ranked 201+ internationally (ARWU 2019). The QS World University Rankings result of 287 places us among the best in the world for earth and marine sciences and agriculture and forestry. The latest Excellence in Research for Australia (ERA) evaluation has us ranked well above world standard in 25 fields of research.

### **Our research**

Our research impacts the future prosperity of society and the environment through innovative new ideas. It focuses on five themes, and our leadership in these areas is demonstrated through our research institutes, including the Menzies Institute for Medical Research, the Institute for Marine and Antarctic Studies, the Centre of Excellence in Ore Deposits, and the Australian Centre for Research on Separation Science. The Antarctic Climate and Ecosystems Cooperative Research Centre and the Australian Maritime College are housed at the university.



## Vice-Chancellor and President

Professor Attila Brungs  
P 02 9514 1333 | F 02 9514 1300  
attila.brungs@uts.edu.au

## Chancellor

Ms Catherine Livingstone AO

## Chief Marketing and Communications Officer

Mr John Chalmers  
P 02 9514 1635  
john.chalmers@uts.edu.au

## Contact Details

15 Broadway  
Ultimo NSW 2007  
P 02 9514 2000 | F 02 9514 1551

## Website

[uts.edu.au](http://uts.edu.au)

## Campus Locations

Sydney CBD

The University of Technology Sydney (UTS) is a vibrant young global university located in a vibrant young global city.

The university is considered among the top 200 universities in the world by both the QS (133rd) and Times Higher Education (160th) global rankings. QS has also named UTS Australia's number one young university in each of the past six years.

UTS is widely known for its innovative learning and teaching approach, which integrates the best of online and face-to-face experiences. Students benefit from an immersive career-focused education, coupled with strong links to industry. They're prepared for tomorrow, in a way which is relevant today.

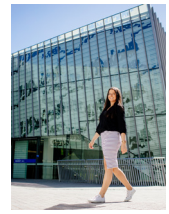
The university's inner-city campus has recently been transformed through a \$1.5 billion investment, which has delivered four award-winning buildings, including internationally-renowned architect Frank Gehry's first Australian venture.

Imbued with collaborative spaces and technological capabilities, the distinctive campus is a physical embodiment of UTS' progressive traits. Socially and culturally diverse, around 30 per cent of UTS' 45,000 students originate from overseas. Some of the university's previous students include actor and producer Hugh Jackman, former Deputy Leader of the Australian Labor Party the Honorable Tanya Plibersek MP, and Sydney Peace Prize winner Sekai Holland.

UTS keeps good company. Over 150 companies partner with UTS, sharing their resources and expertise in exchange for research, innovation programs, development and commercialisation, staff education, and, of course, direct contact with the university's sought-after students.

The university is also well known for its rich contribution to the research sector. Its research spans a range of disciplines, including health, data sciences, sustainability, applied economics, social futures, robotics, civil engineering, future work, microbiology, and quantum computation. 100 per cent of UTS' broad fields of research are benchmarked by the Australian Government at world standard or above, while almost 80 per cent of UTS research is assessed at having a 'high' impact beyond the academic – the highest proportion in the country.

Above all, UTS believes in the value of real-world experience and innovation for its students, and making a positive impact on the world around it.



### Vice-Chancellor and President

Professor Adam Shoemaker  
P 03 9919 4011  
vice-chancellor@vu.edu.au

### Chancellor

The Hon. Steve Bracks AC

### Director, Media and Corporate Communications

Mr Patrick Pantano  
patrick.pantano@vu.edu.au

### Contact Details

Ballarat Road  
Footscray VIC 3011  
P 03 9919 4000

### Website

vu.edu.au

### Campus Locations

City Flinders  
City Flinders Lane  
City King  
City Queen  
Footscray Nicholson  
Footscray Park  
St Albans  
Sunshine  
Werribee  
Sydney  
Online

Victoria University (VU) is the new way to do uni.

VU is the first Australian university to use Block Model learning. This multi award-winning model allows students to complete one subject at a time over four weeks in small classes, meaning they can focus better on each subject and have more one-on-one time with their educators.

Since its launch in 2018, students have become more engaged, get higher pass rates and achieve better grades. VU's TAFE division, Victoria University Polytechnic offers an award-winning blended learning model that replaces paper-based theory with a combination of face-to-face teaching, flexible eLearning and hands-on experience.

As one of only six Australian universities to offer both TAFE and higher education studies, students can use pathways to move between VU Polytechnic and VU courses.

### VU rankings

- Top two per cent globally (THE World University Rankings 2020)
- 56th in the world (THE Young University Rankings 2020)
- 1st in Victoria and 33rd globally for Peace, Justice and Strong Institutions (THE Impact Rankings 2020)
- 1st in Victoria for learner engagement (Good Universities Guide 2021)
- 12th globally for sport education (Shanghai Rankings 2018)
- 28 research disciplines ranked at, above, or well above world standard (Excellence in Research Australia 2018).

### Impactful courses and research

VU's colleges and schools include business, arts and education, engineering and science, health and biomedicine, law and justice, sport and exercise science, the visitor economy, and transport systems and civic infrastructure.

VU research offers outstanding cross-disciplinary research opportunities in sport, health and active living, and sustainable industries and liveable cities. Planetary health, the centre of VU's research activity and moral purpose is reflected in VU's membership in the Harvard University-based Planetary Health Alliance.

Partnerships with more than 4000 organisations inform VU's curriculum and provide students with work-integrated learning opportunities to ensure they're work ready.

### Celebrating diversity

More than 40,000 students from over 90 countries study onshore, and 5400 more are at VU's partner institutions in Asia.

For more than a century, VU has proudly offered its students an accessible, internationally-engaged and industry-focused education that produces career-ready graduates.



### **Vice-Chancellor**

Professor Amit Chakma  
P 08 6488 2801  
vice-chancellor@uwa.edu.au

### **Chancellor**

The Hon Robert French AC

### **Contact Details**

Stirling Highway  
Perth WA 6009  
P 08 6488 6000

### **Website**

[uwa.edu.au](http://uwa.edu.au)

### **Campus Locations**

Perth  
Claremont  
Albany

Established in 1911, Western Australia's first university, The University of Western Australia (UWA), has an international reputation for remarkable and life-changing contributions across research, learning and teaching. UWA is ranked in the world's Top 100 universities and first in Western Australia.

### **Location**

UWA is five kilometres from Perth's central business district, next to Perth's iconic Kings Park and the Swan River.

### **Student experience**

UWA's experience-rich curriculum and global network prepare students for the ever-changing world beyond their degree. UWA students connect with professionals in their field for one-on-one advice through mentoring programs and access local, national and global networks inside and outside the classroom. UWA's Careers Centre and academic, financial and health support services provide holistic care for students on their career pathway. Students join a community, not just a university, making lifelong personal and professional connections. With more than 160 clubs and societies (more than any other Australian university), an active Student Guild and plenty of events to fill the social calendar, students are sure to find a community where they feel at home.

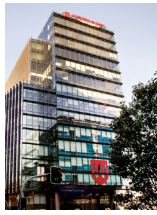
### **Research**

The university is regarded as one of Australia's top research institutions, attracting the world's brightest minds across a wide range of disciplines, with international leaders in many diverse fields. Last year physicist Professor David Blair was awarded the Prime Minister's Prize for Science for contributing to the first detection of gravitational waves. This followed mathematician Professor Cheryl Praeger winning the 2019 Prime Minister's Prize for Science for her pioneering work developing mathematical algorithms driven by symmetry and finite group theory. Professor Praeger was also awarded the inaugural Ruby Payne-Scott Medal this year. UWA is a member of the Group of Eight (a partnership of Australia's leading research-intensive universities), the Worldwide Universities Network and the Matariki Network of Universities.

### **Community**

UWA has a strong connection to industry and government and contributes to communities both locally and internationally. The founder of the Perth Festival (the first of its kind in the southern hemisphere), the university is part of Perth's dynamic cultural scene and its vibrant campus is home to numerous galleries, museums and theatres.





### Vice-Chancellor and President

Professor Barney Glover AO  
P 02 9683 8121 | F 02 9683 8155  
b.glover@westernsydney.edu.au

### Chancellor

Professor Peter Shergold AC

### Manager, Media and Public Relations

Ms Amanda Whibley  
P 02 9678 7084  
a.whibley@westernsydney.edu.au

### Contact Details

Locked Bag 1797  
Penrith NSW 2751  
P 02 9852 5222 | F 02 9852 5960

### Website

westernsydney.edu.au

### Campus Locations

Bankstown  
Campbelltown  
Hawkesbury  
Liverpool  
Nirimba (Blacktown)  
Parramatta (Rydalmere)  
Parramatta City  
Penrith  
Sydney City  
Sydney Olympic Park  
Westmead

Western Sydney University is a modern, student-focused, research-led university, located in Australia's fastest growing and most economically significant region – Greater Western Sydney – and deeply embedded in the communities we serve.

With 11 campuses embracing Australia's global city, Western Sydney University has grown to more than 48,000 students and a cohort, both locally and globally, of more than 200,000 alumni.

### Globally recognised

Ranked in all major global university rankings systems, we are in the top 2 per cent of universities worldwide according to the prestigious Times Higher Education (THE) World University Rankings, and ranked 3rd overall globally in the THE Impact Rankings, for our social, ecological and economic impact.

Western Sydney University is a research leader, with more than 85 per cent of our research rated at 'World standard or above' according to the Excellence in Research for Australia (ERA) evaluation.

### Future focused teaching and learning

Western Sydney University is dedicated to ensuring our students – 65 per cent of whom are the first in their family to attend university – enjoy the best and most dynamic learning experience possible.

We put students at the heart of everything we do. Our innovative 21C Curriculum Project brings students, staff, and external partners together to co-create courses that address the future of work and prepare students for employment success in the 21st century.

### Community

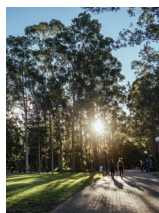
Our Western Growth strategy is reshaping the University's campus network and co-creating cities and transformative educational infrastructure across the region in partnership with industry, government and higher education providers.

The University has two world-class, technology-enabled vertical campuses in the heart of key growth centres in Western Sydney – Parramatta and Liverpool – and in 2022 we will open our third high-rise campus in Bankstown city.

These new campuses offer technology-rich learning, teaching and research spaces for our students and staff, promote collaboration with industry and business, and embed the University in the economic and civic life of the Western Sydney region.



# UNIVERSITY OF WOLLONGONG AUSTRALIA



## Vice-Chancellor and Principal

Professor Patricia Davidson  
P 02 4221 3909  
pdavidson@uow.edu.au

## Chancellor

Ms Christine McLoughlin

## Director – Strategic Marketing and Communications

Ms Emily Osborne  
P 02 4221 5374  
emilyc@uow.edu.au

## Contact Details

Northfields Avenue  
Wollongong NSW 2522  
P 02 4221 3555 | F 02 4221 3128

## Website

uow.edu.au

## Campus Locations

Wollongong  
North Wollongong, Innovation Campus  
Batemans Bay  
Bega  
Shoalhaven  
South Western Sydney (Liverpool)  
Southern Highlands  
Southern Sydney (Loftus, Sutherland Shire)  
Sydney (CBD)  
Dubai  
Hong Kong  
Malaysia

## Fearless in pursuit of purpose

The University of Wollongong (UOW) is among the best modern universities in the world. Founded by local Illawarra people with a vision of a brighter future for the region, UOW has built an international reputation for world-class research and exceptional teaching quality. Three goals drive us towards our purpose; empowering students for their future, creating knowledge for a better world and making a difference for our communities.

## A global university

UOW has a strong international focus and reputation, delivering world-class teaching to more than 36,000 students globally, including at our campuses in Australia, the United Arab Emirates, Malaysia and Hong Kong, as well as teaching locations in China and Singapore.

## Driven by discovery

In a world facing complex social, environmental and economic challenges, UOW is driven to generate outstanding research and forge strong partnerships with government, industry and communities to make a real and lasting impact.

Molecular Horizons: UOW's molecular life sciences research facility is at the forefront of scientific discovery, unlocking the innermost secrets of living cells and developing new ways to cure diseases.

The Health and Wellbeing Precinct, planned for UOW's Innovation Campus, will be Australia's first intergenerational university community; a place for living, learning, working and growing in an environment that supports complete physical, social, and mental health and wellbeing. The precinct will revolutionise the integration of research, clinical practice and patient-led care, and improve community-designed and preventative healthcare.

## Innovation and collaboration

UOW's Innovation Campus allows innovative organisations to co-locate and collaborate with leading research institutes and innovation hubs including the Australian Institute for Innovative Materials, the Sustainable Buildings Research Centre, the Australian Health Services Research Institute and the iAccelerate innovation accelerator, which houses up to 280 start-up entrepreneurs.

UOW's other research institutes and facilities include Early Start Research Institute, Smart Infrastructure Research Facility, Australian Research Centre of Excellence for Australian Biodiversity and Heritage, the Facility for Intelligent Fabrication and the Australian National Centre for Ocean Research & Security.



**Universities Australia is the voice of Australia's universities**

As the peak body for the sector, we highlight the vast social, economic and cultural value of higher education and research to Australia and the world.

On behalf of our 39 member universities, we provide expert policy advice and media commentary on higher education.

We also make submissions, develop policy across the sector, represent Australia's universities on government and industry appointed bodies, and partner with university sectors in other countries to enable bilateral and global collaborations.

We build capacity across the Australian university sector through our flagship annual conference and high-level policy workshops throughout the year.

And we lift the profile of the extraordinary contributions made by university graduates and research to our society and economy, including through our award-winning public awareness campaigns.

Through Universities Australia and our subsidiary Higher Ed Services, member universities also have access to collective procurement and licensing agreements.

For more information, please visit the Universities Australia website:

**[universitiesaustralia.edu.au](http://universitiesaustralia.edu.au)**



UNIVERSITIES  
AUSTRALIA

